

Student application guidelines



# 2024

Enrollment in April 2024

[Comprehensive admission examination]

(Secondary selection)

[General admission examination] (Schedule B)

[Special admission examination for working adults](Schedule B)

## **Graduate School of Sustainability Studies**

### **(Master's Course)**

---

- Social Data Science Program
- Global Sustainability Science Program

November 2023

## University of Toyama

In the event of an unexpected situation, the contents of the student application guidelines, including the examination schedule, may be changed. If it is necessary to make such changes, we will inform you on our website, and please be sure to check the latest information.

<https://www.u-toyama.ac.jp>

# Table of Contents

Admission Overview of the Graduate School of Sustainability Studies (Master’s Course) .....	1
Admission Policy of the Graduate School of Sustainability Studies (Master’s Course) .....	3
I. Comprehensive Admission Examination .....	4
II. General Admission Examination .....	6
III. Special Admission Examination for Working Adults .....	8
General Procedure of Application and Admission	
1. Application Procedure .....	10
2. Examination for Eligibility of Application .....	17
3. Printing of Examination Ticket and Examination Instructions .....	18
4. Announcement of Successful Applicants .....	19
5. Admission Procedure .....	19
6. Precautions .....	20
7. Security Export Control .....	20
8. Preliminary Consultation for Applicants with Disabilities .....	20
9. Policy on Personal Information Protection .....	21
10. Special Measures for Educational Methods based on Article 14 of the Standards for Establishment of Graduate Schools .....	21
Guide of the Graduate School of Sustainability Studies (Master’s Course) .....	22
1. Educational and Research Purpose .....	22
2. Features of the curriculum .....	22
3. List of faculties and research fields .....	23
4. Courses and Credits .....	26
5. Requirements for completion .....	32
6. Long-term study system .....	32

## Admission Overview the Graduate School of Sustainability Studies (Master's Course)

### Admission Quota

Program name	Category	Admission Quota
Social Data Science Program	Admission Examination with Recommendation	A few
	Comprehensive Admission Examination	8
Global Sustainability Science Program	Admission Examination with Recommendation	A few
	General Admission Examination	(Schedule A) 8 (Schedule B) 2
	Special Admission Examination for Working Adults	(Schedule A) A few (Schedule B) A few
Total		18

The Graduate School of Sustainability Studies uses the admission quota of 8 students for the Integrated Arts and Human Sciences Course of the Graduate School of Humanities, Arts, and Social Science and 10 students for the Science and Engineering Course of the Graduate School of Science and Engineering. Each admission quota includes the international student admission quota based on recommendation.

### Admission Schedule

#### - Social Data Science Program

Category	Application period	Date	Announcement of successful applicants
Admission Examination with Recommendation	Wednesday, May 31 to Tuesday, June 6, 2023	Saturday, July 1, 2023	Tuesday, July 18, 2023
Comprehensive Admission Examination (1st selection)	Friday, July 14 to Friday, July 21, 2023	Saturday, August 26, 2023	Friday, September 8, 2023
Comprehensive Admission Examination (2nd selection)	Monday, December 18 to Friday, December 22, 2023	Wednesday, January 24, 2024	Wednesday, February 7, 2024

**- Global Sustainability Science Program**

Category	Application period	Date	Announcement of successful applicants
Admission Examination with Recommendation	Wednesday, May 31 to Tuesday, June 6, 2023	Saturday, July 1, 2023	Tuesday, July 18, 2023
General Admission Examination (Schedule A)			
Special Admission Examination for Working Adults (Schedule A)			
Admission Examination with Recommendation (Schedule B)	Monday, December 18 to Friday, December 22, 2023	Wednesday, January 24, 2024	Wednesday, February 7, 2024
General Admission Examination (Schedule B)			
Special Admission Examination for Working Adults (Schedule B)			

# **Admission Policy**

## **the Graduate School of Sustainability Studies (Master's Course)**

### **Admission Policy**

The Graduate School of Sustainability Studies seeks students who have a strong interest and basic scholastic abilities in academic fields related to a sustainable society such as Data Science and Sustainability Science, and who are willing to contribute to the realization of a sustainable society as a highly specialized professional in the future.

#### **- Social Data Science Program**

Social Data Science Program seeks students who have basic scholastic abilities and are strongly motivated to study Data Science and AI, and who are willing to contribute to the realization of a sustainable society by utilizing their expertise and special skills in the future.

#### **- Global Sustainability Science Program**

Global Sustainability Science Program seeks students who have a strong interest in sustainability science and basic scholastic abilities, and who are motivated to become engineers and researchers who can contribute to the construction of a sustainable society by utilizing their expertise and special skills in the future.

### **Basic policy on selection (admission examination types and their evaluation methods)**

#### **- Comprehensive Admission Examination**

Each applicant will be comprehensively evaluated with his/her knowledge acquired through the undergraduate course, abilities to establish the knowledge and skills necessary for the research subject and the solution, communication skills, and logical thinking ability by requiring each applicant to make a presentation about research and study plans, undergo an individual interview, and participate in a group discussion.

#### **- General Admission Examination**

Each applicant will be comprehensively evaluated by an oral examination, the application documents (certificate of academic achievement, external English test score, and other documents), etc.

#### **- Admission Examination with Recommendation**

Each applicant will be comprehensively evaluated by an interview (including oral questions about academic ability), the application documents, etc.

#### **- Special Admission Examination for Working Adults**

Each applicant will be comprehensively evaluated by an interview (including oral questions about academic ability), the application documents, etc.

# I. Comprehensive Admission Examination

## 1. Number of students to be admitted

Program	Admission Quota
Social Data Science Program	1

## 2. Eligibility of application

Applicants shall be those who fulfill any of the following requirements:

- (1) A person who graduated from a Japanese university or is expected to graduate from it by the end of the previous month for enrollment.
- (2) A person who was granted a bachelor's degree or is expected to be granted it by the end of the previous month for enrollment by the National Institution for Academic Degrees and Quality Enhancement of Higher Education under the provisions of Article 104, paragraph 7 of the School Education Act.
- (3) A person who has completed a 16-year school education course in a foreign country or is expected to complete it by the end of the previous month for enrollment.
- (4) A person who has completed a 16-year school education course of a foreign country by taking classes in Japan through distance education conducted by a foreign school or is expected to complete it by the end of the previous month for enrollment.
- (5) A person (limited to a person who completed a 16-year school education course of a foreign country) who has completed the course designated by the Minister of Education, Culture, Sports, Science and Technology in Japan (hereinafter referred to as MEXT) conducted by an educational institution positioned as having a course of a foreign university under the school education system of the foreign country, or is expected to complete it by the end of the previous month for enrollment.
- (6) A person who was granted a degree equivalent to a bachelor's degree by completing a course with a term of study of 3 or more years at a foreign university or school (limited to institutions that have been evaluated on the overall status of their educational and research activities by a person who has got certified by the government or a governmental organization of the foreign country, or those that designated as being equivalent thereto by the Minister of MEXT), or is expected to be granted it by the end of the previous month for enrollment.

In the above "completing a course" includes the completion of the course by taking classes in Japan through distance education conducted by a foreign school, or completion of the course conducted by an educational institution positioned under the school education system of the foreign country as well as designated in the preceding paragraph.

- (7) A person who has completed a specialized course conducted by an advanced vocational school (limited to those fulfilling a term of study of 4 or more years and other criteria specified by the Minister of MEXT) and designated by the Minister of MEXT on or after the day specified by the Minister of MEXT.
- (8) A person designated by the Minister of MEXT (Public notice No. 5 of the Ministry of Education, 1953).
- (9) A person who has been enrolled in a university for 3 or more years or has completed a 15-year school education course in a foreign country as of the end of the previous month for enrollment, and has been recognized by the Graduate School of Sustainability Studies as having acquired the designated credits with an excellent academic record.
- (10) A person from a foreign country that does not require 16 years for university graduation or a person equivalent thereto, who fulfills the following 2 requirements and is recognized by the Graduate School of Sustainability

Studies as having academic ability equivalent to or higher than that of Japanese university graduates:

a. A person who after completing university education, has been engaged in research for approximately 1 or more years as a research student, researcher, etc. or is expected to be engaged in research as a research student, researcher, etc. for approximately 1 or more years by the end of the previous month for enrollment at a university, an inter-university research institute corporation or equivalent research institution in Japan or a foreign country.

b. A person who will have turned 22 years old by the end of the previous month for enrollment.

(11) A person who has been recognized by the Graduate School of Sustainability Studies as having academic ability equivalent to or higher than that of Japanese university graduates through an individual examination of eligibility for application, and will have turned 22 years old by the end of the previous month for enrollment.

(Note) A person in any case of the Eligibility of Application (9), (10), or (11) is required to undergo an individual Examination for Eligibility of Application in advance. See “2. Examination for Eligibility of Application” on page 17.

### 3. Selection methods

(1) Each applicant will be comprehensively evaluated with his/her knowledge acquired through the undergraduate course, abilities to establish the knowledge and skills necessary for the research subject and the solution, communication skills, and logical thinking ability by requiring each applicant to make a presentation about research and study plans, undergo an individual interview, and participate in a group discussion.

(2) Examination venue: University of Toyama Gofuku Campus (3190 Gofuku, Toyama City)  
The details of the examination venue will be notified when sending the Examination Admission Card.

(3) Examination date and subjects

Date	Time	Examination Subjects
Wednesday, January 24, 2024	From 9:30	Group discussion, Presentation and Interview

(Note) The start time and subjects of the examination may be subject to change depending on the number of applicants and other factors. The details of the examination time, etc. will be notified when the examination ticket is issued.

Contents of the examination subjects

- Group discussion

Multiple applicants will form a group and discuss the topic assigned on the day of the examination (for approximately 45 minutes).

- Presentation

Each applicant will make a presentation on his/her research and study plans for 5 minutes (approximately 10 minutes including a question-and-answer session).

- Interview

An individual interview will be held for approximately 10 minutes to determine his/her aptitude for the desired program.

## II. General Admission Examination

### 1. Number of students to be admitted

Program	Admission Quota
	Schedule B
Global Sustainability Science Program	2

### 2. Eligibility of application

Applicants shall be those who fulfill any of the following requirements:

- (1) A person who graduated from a Japanese university or is expected to graduate from it by the end of the previous month for enrollment.
- (2) A person who was granted a bachelor's degree or is expected to be granted it by the end of the previous month for enrollment by the National Institution for Academic Degrees and Quality Enhancement of Higher Education under the provisions of Article 104, paragraph 7 of the School Education Act.
- (3) A person who has completed a 16-year school education course in a foreign country or is expected to complete it by the end of the previous month for enrollment.
- (4) A person who has completed a 16-year school education course of a foreign country by taking classes in Japan through distance education conducted by a foreign school or is expected to complete it by the end of the previous month for enrollment.
- (5) A person (limited to a person who completed a 16-year school education course of a foreign country) who has completed the course designated by the Minister of Education, Culture, Sports, Science and Technology in Japan (hereinafter referred to as MEXT) conducted by an educational institution positioned as having a course of a foreign university under the school education system of the foreign country, or is expected to complete it by the end of the previous month for enrollment.
- (6) A person who was granted a degree equivalent to a bachelor's degree by completing a course with a term of study of 3 or more years at a foreign university or another foreign school (limited to those that have been evaluated with regard to the overall status of their educational and research activities, etc. by a person who has got certified by the government or a governmental organization of the foreign country, or those that designated as being equivalent thereto by the Minister of MEXT), or is expected to be granted it by the end of the previous month for enrollment.

In the above "completing a course" includes the completion of the course by taking classes in Japan through distance education conducted by a foreign school, or completion of the course conducted by an educational institution positioned under the school education system of the foreign country as well as designated in the preceding paragraph.

- (7) A person who has completed a specialized course conducted by an advanced vocational school (limited to those fulfilling a term of study of 4 or more years and other criteria specified by the Minister of MEXT) and designated by the Minister of MEXT on or after the day specified by the Minister of MEXT.
- (8) A person designated by the Minister of MEXT (Public notice No. 5 of the Ministry of Education, 1953).
- (9) A person who has been enrolled in a university for 3 or more years or has completed a 15-year school education course in a foreign country as of the end of the previous month for enrollment, and has , and has been recognized by the Graduate School of Sustainability Studies as having acquired the designated credits with an excellent academic record.
- (10) A person from a foreign country that does not require 16 years for university graduation or a person equivalent thereto, who fulfills the following 2 requirements and is recognized by the Graduate School of Sustainability



Studies as having academic ability equivalent to or higher than that of Japanese university graduates:

a. A person who after completing university education, has been engaged in research for approximately 1 or more years as a research student, researcher, etc. or is expected to be engaged in research as a research student, researcher, etc. for approximately 1 or more years by the end of the previous month for enrollment at a university, an inter-university research institute corporation or equivalent research institution in Japan or a foreign country.

b. A person who will have turned 22 years old by the end of the previous month for enrollment.

(11) A person who has been recognized by the Graduate School of Sustainability Studies as having academic ability equivalent to or higher than that of Japanese university graduates through an individual examination of eligibility for application, and will have turned 22 years old by the end of the previous month for enrollment.

(Note) A person who intends to file an application in accordance with the Eligibility of Application (9), (10), or (11) is required to undergo an individual Examination for Eligibility of Application in advance. See “2. Examination for Eligibility of Application” on page 17.

### 3. Selection methods

(1) Each applicant will be comprehensively evaluated with the Academic Transcripts from the schools he/she graduated from, any valid external English test score, and the result of the oral examination (including Presentation).

(2) Examination venue: University of Toyama Gofuku Campus (3190 Gofuku, Toyama City)  
For those who reside overseas and have difficulty coming to University of Toyama due to unavoidable circumstances, it is possible to take the examination online.

(3) Examination date and subjects

Date	Time	Examination Subjects
Wednesday, January 24, 2024	From 9:30	Oral examination (Including Presentation)

### III. Special Admission Examination for Working Adults

#### 1. Number of students to be admitted

Program	Admission Quota
	Schedule B
Global Sustainability Science Program	A few

#### 2. Eligibility of application

Applicants shall be those who have 1 or more years of working experience (excluding a period of attending a university or another school) by the end of the previous month for enrollment and fulfill any of the following requirements:

- (1) A person who graduated from a Japanese university.
- (2) A person who was granted a bachelor's degree under the provisions of Article 104, paragraph 7 of the School Education Act.
- (3) A person who has completed a 16-year school education course in a foreign country.
- (4) A person who has completed a 16-year school education course of a foreign country by taking classes in Japan through distance education conducted by a foreign school.
- (5) A person (limited to a person who completed a 16-year school education course of a foreign country) who has completed the course designated by the Minister of MEXT conducted by an educational institution positioned as having a course of a foreign university under the school education system of the foreign country.
- (6) A person who was granted a degree equivalent to a bachelor's degree by completing a course with a term of study of 3 or more years at a foreign university or another foreign school (limited to those that have been evaluated with regard to the overall status of their educational and research activities, etc. by a person who has got certified by the government or a governmental organization of the foreign country, or those that designated as being equivalent thereto by the Minister of MEXT).  
In the above "completing a course" includes the completion of the course by taking classes in Japan through distance education conducted by a foreign school, or completion of the course conducted by an educational institution positioned under the school education system of the foreign country as well as designated in the preceding paragraph.
- (7) A person designated by the Minister of MEXT (Public notice No.5 of the Ministry of Education, 1953).
- (8) A person who has been recognized by the Graduate School of Sustainability Studies as having academic ability equivalent to or higher than that of Japanese university graduates through an individual examination of eligibility for application, and will have turned 22 years old by the end of the previous month for enrollment.

(Note) A person who intends to file an application in accordance with the Eligibility of Application (8) is required to undergo an individual Examination for Eligibility of Application in advance. See "2. Examination for Eligibility of Application" on page 17

#### 3. Selection methods

- (1) Each applicant will be comprehensively evaluated with the Academic Transcripts from the schools he/she graduated from and the results of the interviews (including oral questions about academic ability).
- (2) Examination venue: University of Toyama Gofuku Campus (3190 Gofuku, Toyama City)  
For those who reside overseas and have difficulty coming to University of Toyama due to unavoidable circumstances, it is possible to take the examination online.

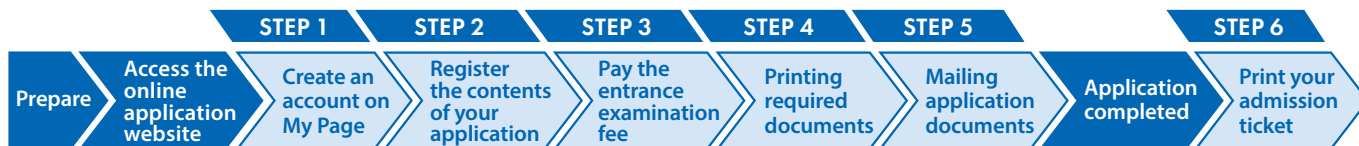
(3) Examination date and subjects

Date	Time	Examination Subjects
Wednesday, January 24, 2024	From 9:30	Interview (including oral questions about academic ability)

# General Procedure of Application and Admission

## 1.Application Procedure

### Online Application Procedure



### Prepare see page 14

Prepare a PC with an Internet connection and a printer, etc. It may take time for the required documents\* to be issued. Please start preparing them early and ensure that you have them with you before applying.

\*Required Documents : An official transcript, data of your photo, etc.  
For details, refer to page 15 to 17 the application guidelines.



### Access the Online Application Website

Access from the Online Application website or the University website

<https://e-apply.jp/ds/toyama-gs/>

<https://www.u-toyama.ac.jp/>



After completing registration on the Internet application site (STEP 2), the application is completed by paying the examination fee (STEP 3), printing and mailing the required documents (STEP 4, STEP 5). Please note that your application is not complete just by registering. Online applications are available 24 hours a day. However, application documents must arrive by 16:00(JST) on the last day of the application period. Please make sure to give yourself plenty of time when applying.

### STEP

### 1

### Create an Account on My Page

Enter the required information according to the instructions on the screen to create an account on My Page. If you have already registered on My Page, proceed to STEP 4.



① If you are registering for the first time, click

**My Page Registration**



② Register your e-mail address and click on

**Send an e-mail for temporary registration**



③ Click on the **To the log-in page** from the user registration screen.



④ A default password and a registration URL will be sent to your registered e-mail address.

\*Configure your e-mail settings to receive e-mails from the @e-apply.jp domain.



⑤ From the log-in screen, use your registered e-mail address and the default password you received in step 4 and click

**log-in**



⑥ Change your default password.



⑦ Enter your personal information and click

**Next**



⑧ Confirm your personal information and click

**Register this information**



⑨ Registration is complete. Click **To My Page**



⑩ When the above page appears, My Page registration is complete. Click on the **Log-out** button.

\*You can proceed to the application procedures by clicking on the **Apply** button only while applications are being accepted. You cannot proceed from here onward during times outside the period.

## STEP

# 2

## Register the Contents of Your Application

Make sure to check the procedures and important notices on the screen, and then enter the required fields according to the instructions on the screen.



① After logging in to My Page, click on the **Apply** button, and the registration page will appear.



② Select an entrance exam and confirm the important notices.



③ Select the desired department, etc.



④ Upload a photo. Click on the **Select Photo** button to select a photo.



⑤ Enter your information entrance (name, address, etc.).



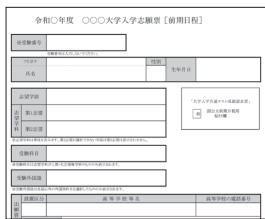
⑥ Confirm the contents of your application. Click on the **Application Form (sample)** button to check your application form.



⑦ Your application is registered. Click on the **Pay** button to proceed to the page where you can pay your entrance examination fee.



⑧ Payment methods for examination fees.  
 ● Convenience stores  
 ● ATMs with Pay-easy  
 ● Online banking  
 ● Credit cards



⑨ Document required for the application in PDF format (Sample)

\*This document can be printed out after the entrance examination fee is paid.

If you have selected "Convenience Stores" or "ATMS with Pay-easy" as your payment method, write down the payment number, which will appear after the selection of a payment method, in the memo space below, and make the payment at a convenience store or an ATM with Pay-easy within the designated payment deadline.

### For 7-ELEVEN

Payment slip number																				
Memo (13 digits)																				

### For LAWSON, MINISTOP, FamilyMart, ATMS with Pay-easy

Customer number memo (11 digits)																				
Confirmation number memo (6 digits)																				

### For Daily YAMAZAKI, Seicomart

Online payment number by Memo (11 digits)																				
---	--	--	--	--	--	--	--	--	--	--	--	--	--	--	--	--	--	--	--	--

Receiving agency number (5 digits)	5	8	0	2	1
------------------------------------	---	---	---	---	---

\*A receiving agency number is required for payment Pay-easy.

A confirmation e-mail will be sent to you after the application registration is completed. If you have restricted the reception of e-mails, please allow e-mails from the sender (@e-apply.jp) to be received. \*Please note that confirmation e-mails may be sorted into your junk e-mail folder, etc.

**Please be careful not to enter incorrect information, as the registered information cannot be changed or modified after the application registration is completed. However, if you have not yet paid the entrance examination fee, you can substantially modify the information by re-registering using the correct information.**

\*Please note that if you have selected a credit card for the "Payment Method for the Entrance Examination Fee," the payment will be completed simultaneously with the registration for application.



# STEP

# 3



## Pay the Entrance Examination Fee

### 1 Credit Card Payment

You can select this method and make a payment when registering your application.

**[Accepted Credit Cards]**

VISA, Master, JCB, AMERICAN EXPRESS, MUFG Card, DC Card, UFJ Card, NICOS Card



Payment is completed upon registration.

### 2 Online Banking Payment

After registering your application, you will be redirected to the page of each financial institution from the current page. Please follow the instructions on the screen to make the payment.

\*For online payment, your bank account must be signed up for internet banking.

The procedures are completed online.

### 3 Convenience Store Payment

Payment at a convenience store can be made using the payment number that will appear after you have registered the application information.

● Payment can be made at a cash register.

● Payment can be made using a store terminal.



Loppi



Multi-functional copy machine

あなたも、コンビニ。 FamilyMart



### 4 Bank ATMs with Pay-easy

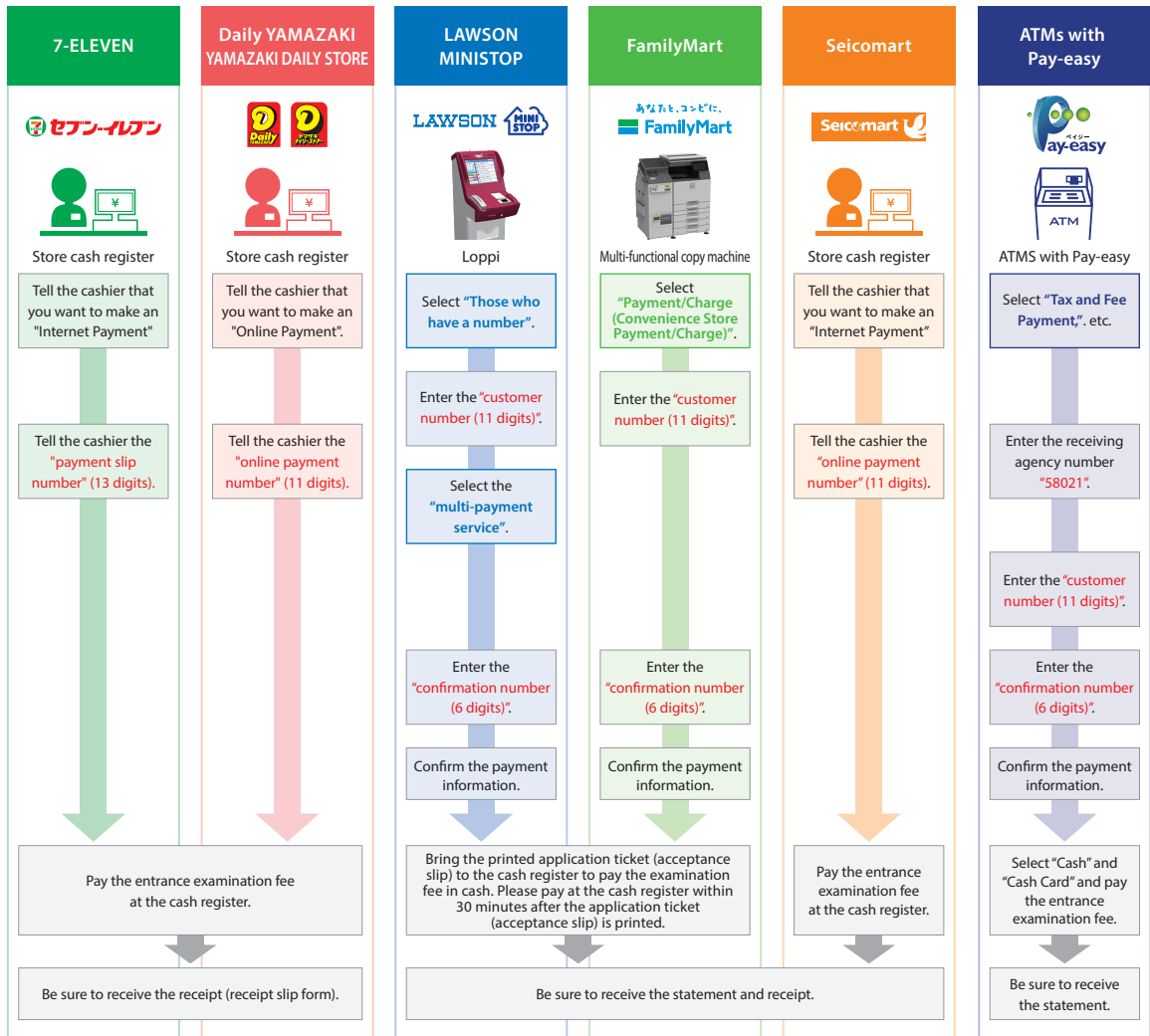
Payment can be made using the payment number that will appear after you have registered the application information at bank ATMs with Pay-easy by following the instructions on the ATM screen.



\*Please check the "Payment Method Selection" screen to see the banks that offer this payment method.

Enter the required information following the instructions on the screen of each convenience store terminal or ATM and confirm the details before paying the entrance examination fee.

### 3 Convenience Stores



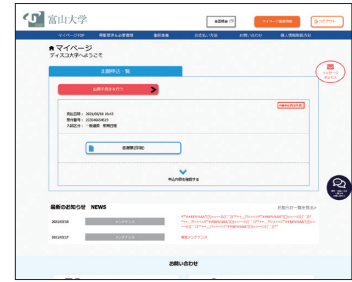
## STEP

# 4



## Printing required documents

Please log in from the "Confirm Application/Print Application Form" button and print the application form and other required documents in color on A4 paper.



Application form PDF (image)

## STEP

# 5



## Mailing application documents

Please note that your application is not complete just by registering.

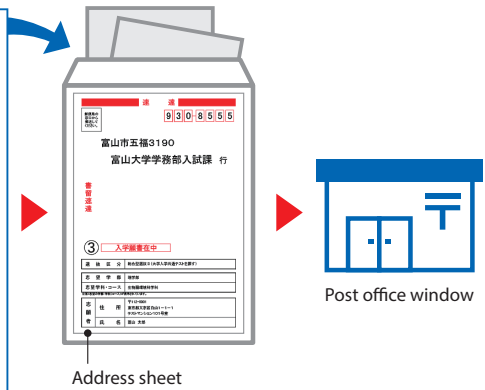
Please send the documents required for application by registered express mail so that they must arrive within the application period, or by EMS, FedEx, DHL, etc. if you live overseas.

### Application Documents

One copy is required for each application registration.

Please refer to pages 15 to 17 of the university's application guidelines to prepare the documents required for application.

<Deadline for submission of application documents>  
16 : 00, Friday , December 22



The mailing address for the application documents is automatically printed on the address sheet.

Paste the address sheet on a commercially available square No. 2 envelope (240mm x 332mm) please.

Once received, the application fee and application documents will not be returned except for reasons specified in the application guidelines.

## < Application completed >

We will not respond to any inquiries regarding acceptance by telephone or other means.

## STEP

# 6



## Print your admission ticket see page 18

You will be able to print your admission ticket from the online application site after the date of issuance of your admission ticket. Please log in from the "Print Examination Ticket" button and print it. Be sure to print the admission ticket in color on A4 paper and bring it with you on the day of the examination.



## (1) Advance preparation

Documents, etc.	Summary
Computer usage environment	<p>Please use the following web browsers for the Internet application.</p> <ul style="list-style-type: none"><li>Microsoft Edge latest version</li><li>Google Chrome latest version</li><li>Mozilla Firefox latest version</li><li>Apple Safari latest version</li></ul> <p>If you use the tab function of your browser to simultaneously perform application operations in multiple tabs, problems may occur, such as the selected contents being carried over to other tabs. Please refrain from operating applications on multiple tabs at the same time.</p> <p>The information may not be displayed properly on some mobile devices such as smart phones and tablets. Please use a personal computer for printing.</p>
PDF display and printing software	<p>Adobe Acrobat Reader DC (free of charge) distributed by Adobe Systems is required to view and print the Application Form (PDF).</p>
Email address	<p>An e-mail address is required for application, so please prepare it in advance. If you have set up a domain name filter, please check the following domains. Please add your settings so that you can receive emails.</p> <p>@e-apply.com</p> <p>If you are registering an e-mail address issued by a smartphone or cell phone carrier, please follow the instructions of your carrier's spam filtering system to ensure that you receive e-mails from @e-apply.jp.</p>
Photograph of applicant himself/herself	<p>Please prepare a photo of your face in a file format (jpeg, jpg, png, bmp) up to 10MB in size.</p> <p>The preferred photo size is a ratio of 4(height)x3(width). Photographs will be used for identification purposes.</p> <p>Please prepare a color photograph (front, upper body, hatless, no background) taken within 3 months prior to the application.</p> <p>Examples of photographs that cannot be used</p> <p>Blurred (blurred, shadows), not background-free (scenery in the background, patterns in the background), difficult to identify (makeup, bangs over eyes, etc.), photo has been altered, developed photo has been re-photographed, etc.</p>
Printer	<p>A color printer capable of printing on plain A4 paper is required to print out the transfer application form and the examination ticket (PDF).</p> <p>Please prepare this along with printing paper (plain paper, PPC paper, common OA paper, copy paper, etc.).</p>
Kakugata2 envelope (240mm x 332mm)	<p>Please prepare a commercially available kakugata2 envelope (240mm x 332mm) for mailing the application documents such as the transfer application form. Please use the "address sheet" printed out when you print out the transfer application form, and paste it on the envelope.</p>



## (2) Application period

**Monday, December 18 - 16:00, Friday, December 22**

Registration for online application and payment of the application fee (30,000yen) will be available from 9:00 a.m. on Thursday, December 14, 2023.

Applications submitted in person will not be accepted. Please send the necessary documents for the application by "EMS, FedEx, DHL, etc." within the application period.

Please note that applications arriving after the application period will not be accepted. However, only registered express mail postmarked by December 21 (Thu.) will be accepted even if it arrives after the application period.

Please note that the University will not respond to inquiries regarding the arrival of application envelopes sent by registered express mail.

Applicants are requested to confirm the arrival of the application envelopes by using the "Mail Tracking Service" on the Japan Post's website.

**Applicants are required to consult in advance with the prospective advisor of the program/educational field they wish to apply for.**

## (3) Examination fee 30,000 yen

Payment of the application fee will be made after the completion of STEP2 "Registration of Application Details" of the online application process, and the payment must be made according to STEP3 "Payment of Application Fee. After the payment of the application fee, you will be able to print out the application form and other documents. Japanese Government Scholarship students are not required to pay the application fee.

Please note that a separate fee is required for payment of the examination fee.

**The examination fee, once received, will not be refunded except in the following cases.**

- ① If you paid the application fee but did not apply to the University of Toyama (didn't submit the application documents, etc. or your application wasn't accepted) <<Refund Amount>> 30,000 yen
- ② In case of double payment of the examination fee <<Refund Amount>> 30,000 yen
- ③ In the case that a large amount of the examination fee has been paid, the amount of the examination fee will be refunded.

However, the recipient is responsible for the bank transfer fee when the application fee is refunded.

### (note) Method of claiming

Please fill out the "Written Claim for Refund of Examination Fee" (designated form) and send it to the University by mail.

Send to: **Accounting Section, Finance Department, University of Toyama,  
3190 Gofuku, Toyama City, Toyama Prefecture, 930-8555, Japan  
Phone +81-(0)76-445-6053**

## (4) Application Documents, etc.

Please send the following required documents by registered express mail in an envelope with an "address sheet" attached.

① Types of printing from the Internet application site

Documents, etc.		Summary
1	Application form for admission	Please print in color in A4 size from the Internet application website. Printing will be available after payment of the examination fee.
2	Address sheet	Please print in color in A4 size from the Internet application website. Please affix it to a commercially available kakugata2 envelope (240mm×332mm) without peeling off.
3	Pledge	Please print it out in A4 size from the online application site. See "7. Security Exports" (page 20).

(Note) Be sure to check the printed information for errors.

② Type of preparation by the applicant

Documents, etc.		Summary
1	Certificate of (expected) graduation	A document prepared by the president or dean of the university from which the applicant graduated. (Note that prospective graduates do not need to submit this form.)
2	Certificate of degree conferment or certificate of (planned) application for degree conferment	<b>Only those who meet the requirements for application (2) need to submit the application form.</b> Certificate of (planned) application for degree conferment issued by the National Institution for Academic Degrees and University Reform, or by the president of the junior college or the president of the college of technology.
3	Academic transcript	A copy prepared by the president or dean of the applicant's home university, and sealed securely. However, if you use anti-counterfeiting/anti-copying paper, you do not need to seal it strictly.
4	Copy of TOEIC/TOEFL Score Sheet (*If you are a foreign national and have not taken TOEIC/TOEFL, Please submit the results of other tests that show your English proficiency.	<b>Only applicants for General Admission Examination</b> Please submit a copy (A4 size) of one of the score sheets (1) through (4) below. However, if you have more than one score sheet, you may submit up to two copies. (*If you are a foreign national and have not taken TOEIC/TOEFL, please submit the results of other tests that show your English proficiency. [1] TOEIC Listening & Reading Official Score Certificate [2] TOEIC-IP score report (individual score sheet) [3] Test Taker (Examinee) Score Report for the TOEFL iBT [4] TOEFL-ITP score report Please note that score sheets must be issued for tests taken on or after April 1, 2020. Please be sure to bring the original documents with you so that we can verify them on the day of the examination. If you do not bring the original score sheet, you will become ineligible for the selection.

5	Recommendation (prescribed form)	<b>Only applicants for Admission Examination with the Special Admission Examination for Working Adults</b> A copy prepared and strictly sealed by the president (dean), principal, or academic advisor of the applicant's home university. For those who are currently employed at a public office or company, a copy prepared and strictly sealed by the head of the organization.
6	Self-recommendation form (prescribed form)	<b>Only applicants for Comprehensive Admission Examination</b> To be completed by the applicant him/herself
7	Statement of Purpose (Prescribed form)	To be completed by the applicant him/herself.
8	Research Plan (prescribed form)	To be completed by the applicant him/herself.
9	Copy of certified certificate of residence	<b>Only applicants with non-Japanese nationality</b> If you are currently residing in Japan, please submit the one issued by the mayor of the city/town/village (the one clearly indicating your status of residence).

(Note) Documents written in a foreign language other than English must be accompanied by documents translated into Japanese or English.

## 2. Examination for Eligibility of Application

Applicants who want to apply for Comprehensive Admission Examination, and General Admission Examination fall under the Eligibility of application (9), (10), and (11). applicants who want to apply for Special Admission Examination for Working Adults fall under the Eligibility of application (8) must submit the designated documents by the due date by making an inquiry with the following office for the purpose of conducting an individual examination for Eligibility of Application.

### [Inquiry and Submission]

Examination Section of Admissions Office, School of Science, Academic and Student Affairs Division of Science and Engineering, University of Toyama, 3190 Gofuku, Toyama City, Toyama Prefecture, 930-8555, Japan **Phone:** +81-(0)76-445-6546

### (1) Documents necessary for the Examination for Eligibility of Application

[1] Application for the Examination for Eligibility of Application (Designated form)

[2] Certificate of Enrollment or Certificate of (Expected) Bachelor's Degree

[3] Academic Transcript

[4] Curriculum Vitae (Designated form, Only for foreign applicants)

[5] Other Necessary Documents

Applicants falling under the Eligibility of application (9) for Comprehensive Admission Examination and General Admission Examination

- Letter of Recommendation (Designated form)

- Curriculum Table of the faculty the applicant belongs to

Applicants falling under the Eligibility of application (10) for Comprehensive Admission Examination, and General Admission Examination

- Document certifying that the applicant was engaged as a research student, researcher, etc.
- Applicants falling under Eligibility of application (11) for Comprehensive Admission Examination, General Admission Examination and applicants falling under the Eligibility of application (8) for Special Admission Examination for Working Adults
- Job Performance Report (Designated form)

(Note) Submit the original documents. Copies will not be accepted.

Documents written in a foreign language other than English must be accompanied by documents translated into Japanese or English.

**(2) Deadline for the submission of documents**

**16:00, Monday, December 4, 2023**

In principle, the application documents shall be submitted by mail and must reach the university by the abovementioned period. If an applicant brings the application documents himself/herself to the university for some inevitable reason, we will accept them between 9:00 and 16:00. (We cannot accept them on Saturdays, Sundays, and national holidays.) We cannot accept the application documents after the expiration of the application period.

**(3) Notification of the examination results**

University of Toyama will send a notification of the result of the Examination for Eligibility of Application by mail to the applicant by the following date.

**Wednesday, December 13, 2023.**

### **3. Printing of Examination Ticket and Examination Instructions**

- (1) The examination ticket will be available for printing on the Internet application site on or after the date of issuance of the ticket after the University receives the application documents sent by the applicant. When the examination ticket is ready to be printed, we will notify the applicant's e-mail address registered at the time of online application.

**Friday, January 12, 2024 (scheduled)**

(Note) The date of issuance of examination ticket is tentative and may be subject to change.

- (2) Log in to My Page from "Login" on the Internet Application Site. To log in, you will need [your e-mail address and the password you set yourself].
- (3) After logging in, download the examination ticket.  
Print out the examination ticket in color on A4 paper and bring it with you on the day of the examination. Please be sure to bring the examination ticket with you on the day of the examination. Please be sure to read the "Examination Instructions" printed with the examination ticket.

## Precautions

- (1) After printing the examination ticket, be sure to check the information on it. If the information on the application form is different from what you registered, please contact the Admissions Office (Office of the Faculty of Science and Technology) immediately.  
Also, be sure to check that the examination number on the computer screen and the number on the printed examination ticket match.
- (2) Even if you do not receive an e-mail, please log in to the Internet application site and print out the examination ticket and instructions for the examination.
- (3) The number you received when you registered your application online is not your examination number.
- (4) On the day of the examination, smartphones and other devices will not be allowed to display the examination ticket on their screens. Please be sure to bring the printed examination ticket and keep it in a safe place after the examination.

## 4. Announcement of successful applicants

On the following date and time, the examination numbers of successful applicants will be posted on University of Toyama website and a letter of acceptance will be mailed to the applicant. No inquiries by telephone or other means will be accepted.

**15:00, Wednesday, February 7, 2024(scheduled)**

## 5. Admission Procedure

The admission procedure is as follows, but the details will be notified to the successful applicants.

- (1) Admission procedure period  
**Wednesday, March 6, 2024 (scheduled)**
- (2) Expenses required at the time of the procedure
  - a. Enrollment Fee: 282,000 yen (Subject to change)  
The Enrollment Fee shown above is the planned amount. If it is revised at the time of enrollment, the new Enrollment Fee will apply.  
The paid Enrollment Fee will not be refunded.  
To cancel the admission to University of Toyama, you must notify University of Toyama in writing (Any form acceptable).
  - b. Others  
The successful applicants must pay other expenses, including the fee for the Personal Accident Insurance for Students Pursuing Education and Research, etc.
- (3) If you do not complete the admission procedure within the Admission procedure period, you will be considered to have declined the admission.
- (4) Payment of the Tuition Fee  
Students must pay the Tuition Fee by account transfer after enrollment.  
The exact amount of the Tuition Fee and detailed method of the payment will be announced at the time of the admission procedure. The Tuition Fee of academic year 2023 amounted to 535,800 yen.
- (5) Students who have any of the following conditions may be applied for and granted for full or half exemption of the Enrollment Fee or the Tuition Fee.  
[1] Students with an excellent academic record who have difficulty to pay the fees because of financial

reasons.

[2] Students who find it extremely difficult to pay the fees because of the death of the financial sponsor or an unpredictable circumstance such as natural disasters.

- (6) Students who wish to lend a scholarship may be applied for and selected for a scholarship from organizations such as the Japan Student Services Organization.

## 6. Precautions

- (1) Application may not be accepted if applicants fail to submit any of the required documents.
- (2) Application Documents cannot be changed once they have been submitted. Application documents will not be returned in any circumstances once they have been submitted except when the return there of is clearly stated.
- (3) Applicants who do not take all the required examinations will be automatically disqualified from the selection process. Be sure to bring the Examination Admission Ticket to the examination.
- (4) In the event that false statements are made in the application documents, admission may be revoked even after the applicant has been admitted.

## 7. Security Export Control

University of Toyama has established the University of Toyama Security Export Control Regulations based on the Foreign Exchange and Foreign Trade Act, and conducted strict screening for security export control in the perspective of providing technology and export of research equipment and materials. Since students who fall under any of the regulated items, they may not be able to get the permission to enroll or receive the desired education, or they may have restrictions on their desired research activities at University of Toyama.

For more information, visit the University Website.

[Reference] University of Toyama Security Export Control Regulations

URL <http://www3.u-toyama.ac.jp/soumu/kisoku/pdf/0110401.pdf>

## 8. Preliminary Consultation for Applicants with Disabilities

University of Toyama provides consultation for applicants with disabilities who may require special arrangements during the entrance examination or in classes after enrollment. Applicants for the Preliminary Consultation should contact the office below prior to application.

**Consultation Deadline: Wednesday, January 10, 2024**

**Contact:** Examination Section of Admissions Office, School of Science, Academic and Student Affairs  
Division of Science and Engineering, University of Toyama, 3190 Gofuku, Toyama City, Toyama Prefecture,  
930-8555, Japan      **Phone:** +81-(0)76-445-6546

Applicants for the Preliminary Consultation may need to submit a medical certificate issued by a doctor and documents specifying the following information.

- Type(s) of disabilities and the degree of severity
- Items for special arrangements required during the entrance examination
- Items for special arrangements required in classes after enrollment
- Situation of daily life and other related information

## 9. Policy on Personal Information Protection

Personal information possessed by University of Toyama shall be handled based on the Act on the Protection of Personal Information, and University of Toyama Personal Information Protection Policy.

- (1) Personal information (including name, address, etc.) of applicants obtained through the application shall be used for ① application and selection procedure, ② announcement of successful applicants, ③ admission procedure, ④ survey/study of the selection method, and ⑤ operations associated with these purposes.
- (2) Personal information of those who completed the admission procedure obtained through the application shall be used for post-admission operations related to ① academic affairs (registration, study guidance, etc.), ② student support (health care, application for tuition exemption/scholarship, career support, etc.), ③ tuition collection work, and ④ statistical survey and data analysis.
- (3) Only the examinee's numbers, names, and addresses of successful applicants may be used for contact with the Alumni Association or Co-op as an affiliated organization. If successful applicants do not wish to have any contact with these organizations, inform the office below.

**Contact:** Examination Section of Admissions Office, School of Science, Academic and Student Affairs

Division of Science and Engineering, University of Toyama, 3190 Gofuku, Toyama City, Toyama Prefecture, 930-8555, Japan      **Phone:** +81-(0)76-445-6546

- (4) University of Toyama may have contractors do some kind of university operations. When conducting the operations, all or part of the personal information obtained shall be provided to the contractor within the limit necessary to perform the operations, however, University of Toyama supervises the use of information to ensure compliance with confidentiality.

## 10. Special Measures for Educational Methods based on Article 14 of the Standards for Establishment of Graduate Schools

Article 14 of the Standards for Establishment of Graduate Schools stipulates that "Where it is deemed to be particularly necessary from an educational standpoint, education can be provided by an appropriate method, such as providing classes or research guidance at night or at other specific times/periods." Based on this, the Graduate School of Sustainability Studies will provide consultation on the time schedule as much as possible, including day and night classes or other times, taking into consideration the working conditions of the workplace so that working adults enable to study without leaving their jobs.

# Guide of the Graduate School of Sustainability Studies (Master's Course)

## 1. Educational and Research Purpose

Educational and research purpose of the Graduate School of Sustainability Studies is to develop human resources who can contribute to the construction of “Sustainable society” by teaching and researching interdisciplinary theories and their applications of Science and Engineering, and Social Sciences that are necessary for the construction of “Sustainable society.” The Graduate School of Sustainability Studies let students learn the insights of interdisciplinary theories and their applications of Science and Engineering, and Social Sciences, and acquire deep knowledge, outstanding abilities and ethics that are indispensable for professions requiring a high level of expertise.

### (1) Social Data Science Program

Considering the time background of modern society, such as population decline, super-aging, global warming, and the development of Digital Science, the Social Data Science Program seeks to realize “Sustainable society” that can achieve both economic growth and solutions to social problems by utilizing Data Science and AI.

### (2) Global Sustainability Science Program

The Global Sustainability Science Program seeks to develop human resources who can contribute to the construction of “Sustainable society” and the achievement of SDGs by learning Sustainability Sciences which is necessary to realize “Sustainable society” from a broad international perspective and acquire problem-solving abilities through cross-cutting approaches extending from Natural Science to Social Science.

## 2. Features of the curriculum

Feature of the curriculum of the Graduate School of Sustainability Studies is the establishment of classes in a wide range of academic fields of both Humanities and Sciences from 2 perspectives of “Region” and “Global scale”. In these classes, the issues confronting modern society are dealt with for the aim of developing human resources capable of solving issues toward the realization of “Sustainable society.” The faculties of the Graduate School of Sustainability Studies are mainly from the academic fields of Social Science (Economics, Business Administration) and Science and Engineering (Environmental Science, Urban Design), and the classes are designed to encourage students to constantly think about issues related to a “Sustainable society” from social, environmental and economic perspectives.

Students will be able to acquire universal and specialized abilities through common classes of whole graduate school providing comprehensive knowledge, common classes of the Graduate School of Sustainability Studies providing comprehensive knowledge and practical skills related to “Sustainable society,” and special classes of the Graduate School of Sustainability Studies providing specialized knowledge and skills necessary to solve problems in a particular field. In addition, they will receive research guidance from multiple advisors from multiple academic fields.

The Graduate School of Sustainability Studies places importance on cross-cutting studies for subjects that students set themselves. For this, a common curriculum is established for both programs, which provides lectures, exercises, and practice that carrying the importance. Since less time is allocated to special research than conventional type curricula, study plans are easier to design, as a result, it can meet the needs for the relearning of working adults. At the same time, the Global Sustainability Science Program also provides a conventional type curriculum that emphasizes studies through special research, so that students can select curricula in accordance with their needs.



### 3. List of faculties and research fields

#### Social Data Science Program

Research Field	Faculty Name	Research Description
Economics	KARATO Koji, Professor	Real estate price index analysis, urban and regional economic analysis, real estate market analysis in the fields of economic statistics and econometrics.
Economics	MOVSHUK Oleksandr, Professor	Research guidance on related topics in econometrics.
Economics	HOMMA Tetsushi, Professor	The teaching of the theoretical and empirical analyses of the industrial organization of banking in the field of financial economics, industrial organization, and econometrics.
Sociology	NAKAMURA Mayumi, Professor	Professor Nakamura specializes in gender stratification and social research methods. She conducts quantitative and qualitative research on regional revitalization (地方創生) and related topics, such as low birth rates, the compact city policy, the introduction of the bullet train, and youth depopulation.
Business Management	YOKOYAMA Kazunori, Professor	In operations research, provide research guidance on mathematical optimization and other related topics
Information Science	HORITA Yukou, Professor	Data acquisition and analysis toward the realization of smart cities in information communication engineering, perception information processing, human information science, and electric power engineering, and forest science.
Information Science	INOBUCHI Munenari, Associate Professor	Disaster response, evacuation action plans, etc. in disaster information science, behavioral disaster prevention science, service information science, and system design science.
Information Science	HARUKI Takayuki, Associate Professor	Information science, pre-symptomatic disease science, and plasma physics.
Urban Design Science	HORI Yuji, Professor	Evaluations and improvements in architecture and cities, the reduction of environmental burdens and of energy consumption and transformation into renewable energies, etc. toward recycling society, etc. in environmental engineering and facility engineering.
Urban Design Science	INOI Hiroto, Associate Professor	Impact assessments of the construction and maintenance of public transportation and behavior modification from automobiles to public transportation in civil engineering planning, traffic engineering, and urban planning.
Urban Design Science	YASUE Ken-ichi, Associate Professor	Regional disaster prevention and educational tourism in geomorphology and geology.

## Global Sustainability Science Program

Research Field	Faculty Name	Research Description
Environmental and Analytical Chemistry	KURAMITZ Hideki, Professor	Environmental chemistry and analytical chemistry, and conducts research guidance in the development of new sensors and analysis methods and environmental measures utilizing them.
Soil Environmental Studies	SAZAWA Kazuto, Lecturer	Our laboratory provides instruction in the chemical analysis of organic substances in soil and aquatic environments, their interactions with environmental contaminants, and the ecotoxicological changes that result from these interactions.
Geochemistry	ZHANG Jing, Professor	Chemical oceanography and environmental geochemistry, and conducts research guidance in the collection and understanding of necessary scientific information and investigation and research methods.
Geochemistry	HORIKAWA Keiji, Professor	Environmental geoscience, and conducts research guidance in the collection and understanding of necessary scientific information and investigation and research methods.
Ecology	WADA Naoya, Professor	Ecology and environmental conservation science, and conducts research guidance in the collection and understanding of necessary scientific information and investigation and research methods.
Pest Management Science	TSUCHIDA Tsutomu, Associate Professor	General insect pest control and the utilization of biological genetic resources focusing on biological interactions and endosymbiosis phenomena.
Environmental Physics	ENOMOTO Katsunari, Associate Professor	Investigations of the characteristics and reaction element processes of air pollutants and heavy metal-containing molecules using laser spectroscopy technology and the development of environmental monitoring technology.
Economics	LONG Shixian, Professor	Environmental industry and environmental economics, focusing on a circulation system of human beings, economy, and nature, and conducts research guidance in the collection and understanding of necessary scientific information and demonstrative and empirical research methods.
Economics	MA Jun, Professor	Management of organizations and human resources, and conducts research guidance in the collection and understanding of necessary scientific information and investigation and research methods.
Area Studies	HORIE Norio, Professor	Migration studies and border studies, focusing on migrants' daily life in urban area in the European part of Russia and the Sino-Russian border regions. Multi-disciplinary approach to explore more complex observations regarding the negative and positive impacts of migrants on local society and regional development.
International Relations Theory	IKEDA Josuke, Associate Professor	Intermingling international politics, global ethics, and pedagogics, and conducts research guidance in the collection and analysis of empirical and normative scientific information, theory construction, and methods for case studies.

Sustainability Science	GEETHA Mohan, Professor	Sustainability Science is an emerging field focusing on practical challenges like agriculture (crop) losses, food security, and water scarcity caused by climate and non-climate elements (population growth, governance, desertification etc.). The research guidance offers an understanding of the association between natural and social sciences for pursuing productive solutions to address these sustainability challenges.
Sustainability Science	CHAKRABORTY Shamik, Associate Professor	Rooted in the discipline of sustainability studies as a holistic and transformative science, research guidance will be provided on issues related to the SDGs and provide research guidance on sustainable use and management of natural resources, and valuation of ecosystem services from the perspective of social ecological systems.
Sustainability Science	SHISHIR SHARMIN Assistant Prof.	The course will address issues related to the SDGs in the fields of land use and environmental conservation, using state-of-the-art technologies such as geographic information systems (GIS) and remote sensing for the conservation of ecosystems and the natural environment. In addition, research guidance will be provided on organizing and understanding basic academic knowledge and research methods.

## 4. Courses and Credits

### Common Graduate Courses for All Graduate Schools

Subject Category	Subjects	Credits
	○ Research Ethics	1
	○ Science, Technology and Sustainable Society	1
	Geographical Symbiosis Social Theory	1
	Communication for Researchers	1
	Art and Design Thinking	1
	Academic Writing I	1
	Academic Writing II	1
	Advanced Data Science	1
	Career Development for Graduate Students	1
	Intellectual Property Law	1

Remarks : ○ denotes a required subject.

### Common Graduate Courses

Subject Category	Subjects	Credits
	○ Introduction to Science for Sustainable Societies	1
	Cultural Diversity for Sustainable Societies	1
	Environmental Science for Sustainable Societies	1
	International Political for Sustainable Societies	1
	Design Thinking	1
	Entrepreneurship	1
	Internship	1

Remarks : ○ denotes a required subject.

## Interfaculty Specialty Courses (Social Data Science Program)

Subject Category	Subjects	Credits	
Foundation Subjects	○Advanced Linear Algebra	1	
	○Advanced Mathematical Statistics I	1	
	○Advanced Mathematical Statistics II	1	
	○Advanced Information Science	1	
	○Advanced Cyber Physical Systems	1	
	○Advanced Information Sensing	1	
Practical Subjects	Advanced Optimization Theory	1	
	Advanced Time Series Analysis	1	
	Advanced Stochastic Processes	1	
	Machine Learning Theory I	1	
	Machine Learning Theory II	1	
	Advanced Spatial Statistics I	1	
	Advanced Spatial Statistics II	1	
	Advanced Text Mining	1	
	Special Lecture on Econometrics I	1	
	Special Lecture on Econometrics II	1	
	Advanced Social Data Science Seminar A	1	
	Advanced Social Data Science Seminar B	1	
Domein Subjects	<Sustainable Design>		
	Advanced Urban and Regional Planning	1	
	Advanced Transport for a Sustainable Society	1	
	Advanced Natural Hazard and Disaster Study	1	
	Advanced Disaster Information Management	1	
	Advanced Numerical Simulation	1	
	Advanced Urban and Architectural Environment Design I	1	
	Advanced Urban and Architectural Environment Design II	1	
	Advanced Urban and Architectural Facilities Design I	1	
	Advanced Urban and Architectural Facilities Design II	1	
	<Social Science>		
	Special Lecture on Community Sociology I	1	
	Special Lecture on Community Sociology II	1	
	Special Lecture on Management I	1	
	Special Lecture on Management II	1	
	Special Lecture on Modern Economic Theory I	1	
	Special Lecture on Modern Economic Theory II	1	
	Special Lecture on Applied Econometrics I	1	
	Special Lecture on Applied Econometrics II	1	
	Special Lecture on Econometrics of Financial Markets I	1	
	Special Lecture on Econometrics of Financial Markets II	1	
	Special Lecture on Mathematical Programming I	1	
	Special Lecture on Mathematical Programming II	1	
	Special Lecture on Public Finance I	1	
	Special Lecture on Public Finance II	1	
	Special Lecture on Social Research Methods I	1	
	Special Lecture on Social Research Methods II	1	
	Special Lecture on Selected Topics in Operations Research I	1	
	Special Lecture on Selected Topics in Operations Research II	1	
	Special Research	○1st-Year Pro-seminar in Social Data Science	1
		○2nd-Year Pro-seminar in Social Data Science	1
		○1st-Year Thesis Seminar in Social Data Science	1
○2nd-Year Thesis Seminar in Social Data Science		1	

Remarks : ○ denotes a required subject.

## Interfaculty Specialty Courses (Global Sustainability Science Program)

Subject Category	Subjects	Credits
Foundation Subjects	○ Fundamentals of Environmental Science for Sustainable Societies	1
	○ Fundamentals of Economics for Sustainable Societies	1
	○ Advanced Academic Writing and Communication for Sustainability Science	1
	○ Data analysis and GIS for Sustainability Science	1
Practical Subjects	Advanced Migration Studies	
	Advanced Border Studies	
	Special Study of Management I	1
	Special Study of Management II	1
	Advanced Globalization Studies I	1
	Advanced Globalization Studies II	1
	Special Lecture on Public Finance I	1
	Special Lecture on Public Finance II	1
	Advanced Private International Law I	1
	Special Lecture on Environmental Industry Theory I	1
	Special Lecture on Environmental Industry Theory II	1
	Climate Change, Sustainable Agriculture and Food Security	1
	Sustainable Water Resources Management	1
	Climate Change Analysis	1
	Advanced Analytical Science for Sustainable Water Environment I	1
	Advanced Analytical Science for Sustainable Water Environment II	1
	Advanced Analytical Science for Sustainable Water Environment III	1
	Advanced Analytical Science for Sustainable Water Environment IV	1
	Chemical Oceanography	1
	Chemistry for Volcanoes and Earthquakes	1
	Advanced Sustainable Physics: Energy and Measurement Technology	1
	Advanced Plant Ecology	1
	Advanced Conservation Biology	1
	Advanced Plant Production	1
	Integrated Pest Management	1
	◎Global Sustainability Science Field Exercise	2
	◎Global Sustainability Science English Exercise	2
	◎Sustainable Coexistence between People and Nature Having 4000 m Altitudinal Difference	1
	◎Short-term Sustainability Science Internship	1
	Migration Studies Seminar I	1
	Migration Studies Seminar II	1
	Border Studies Seminar I	1
Border Studies Seminar II	1	

Practical Subjects	Seminar for Public Finance I	1
	Seminar for Public Finance II	1
	Seminar on Public Economics I	1
	Seminar on Public Economics II	1
	Seminar for Environmental Industry Theory I	1
	Seminar for Environmental Industry Theory II	1
	Seminar for Environmental Economics I	1
	Seminar for Environmental Economics II	1
	Seminar for Management of Organization and Human Resource I	1
	Seminar for Management of Organization and Human Resource II	1
	Seminar on Human Development Policy I	1
	Seminar on Human Development Policy II	1
	Seminar on Global Politics	1
	Seminar on Glocal Political Economy	1
	Seminar on Global Civil Society Studies	1
	Seminar on Globalization Studies	1
	Global Sustainability Challenges-I	1
	Global Sustainability Challenges-II	1
	Building Resilient and Sustainable Societies-I	1
	Building Resilient and Sustainable Societies-II	1
	Seminar on Climate Change Analysis I	1
	Seminar on Climate Change Analysis II	1
	Seminar on Isotopic Geochemistry I	1
	Seminar on Isotopic Geochemistry II	1
	Seminar on Analytical Chemistry in Environmental Monitoring I	1
	Seminar on Analytical Chemistry in Environmental Monitoring II	1
	Seminar on Chemistry in Water Treatment I	1
	Seminar on Chemistry in Water Treatment II	1
	Seminar on Environmental Water Analysis I	1
	Seminar on Environmental Water Analysis II	1
	Seminar on Environmental Soil Analysis I	1
	Seminar on Environmental Soil Analysis II	1
	Seminar on Chemical Oceanography I	1
	Seminar on Chemical Oceanography II	1
	Seminar on Hydrosphere Geochemistry I	1
	Seminar on Hydrosphere Geochemistry II	1
	Seminar on Environmental Physics I	1
	Seminar on Environmental Physics II	1
	Seminar on Quantum Electronics I	1
	Seminar on Quantum Electronics II	1
	Seminar on Plant Ecology	1
Seminar on Forest Ecology and Management	1	
Seminar on Alpine Ecology	1	
Seminar on Conservation Biology	1	

Subject Category	Subjects	Credits
Practical Subjects	Seminar on Crop Genetics I	1
	Seminar on Crop Genetics II	1
	Seminar on Plant Molecular Genetics I	1
	Seminar on Plant Molecular Genetics II	1
	Seminar on Symbiosis Science I	1
	Seminar on Symbiosis Science II	1
	Seminar on Integrated Pest Management I	1
	Seminar on Integrated Pest Management II	1
Special Research	⊙ Research track	
	Master's Research on Sustainability Science for Research Track I	2
	Master's Research on Sustainability Science for Research Track II	2
	Master's Research on Sustainability Science for Research Track III	2
	Master's Research on Sustainability Science for Research Track IV	2
	Master's Research on Sustainability Science for Research Track V	2
	⊙ Specialist track	
	Master's Research on Sustainability Science for Specialist Track I	2
Master's Research on Sustainability Science for Specialist Track II	2	

Remarks : ⊙ denotes a elective required subject. (Select either Research track or Specialist track)



## 5. Requirements for completion

A master's degree will be awarded to students who have been enrolled in the Master's Course of the Graduate School of Sustainability Studies for 2 or more years, have acquired 30 or more credits from the designated classes of each program, and have passed the dissertation review and the final examination. However, with regard to the period of enrollment, if a student has achieved excellent research results, a master's degree will be awarded to the student on condition that he/she is enrolled in the Graduate School of Sustainability Studies for at least 1 year.

The degrees awarded in each program are as follows:

### Degree to be awarded

Social Data Science Program	Master's degree (Science)
Global Sustainability Science Program	Master's degree (Sustainability Science)

## 6. Long-term study system

Long-term study system is for student who has a full-time occupation and difficulty completing his/her Master's Course within the standard study period because of restricted time for class attendance or conducting research. The student may extend the study period of up to 4 years.

If application is approved at the time of admission, the student will pay the total amount of the tuition fee of 2 years evenly divided for each semester in the period approved.

The details of the Long-term study system, including the application method, will be informed when we send the documents for the admission procedure by mail.

Note that applications may not be approved.