

2026

Enrollment in October 2025

- [Comprehensive admission examination]
- [Admission examination with recommendation] (Schedule A)
- [General admission examination] (Schedule A)
- [Special admission examination for working adults] (Schedule A)

Enrollment in April 2026

- [Comprehensive admission examination]
- [Admission examination with recommendation] (Schedule A)
- [General admission examination] (Schedule A)
- [Special admission examination for working adults] (Schedule A)

Graduate School of Sustainability Studies (Master's Course)

- Social Data Science Program
- Global Sustainability Science Program

April 2025

University of Toyama

In the event of an unexpected situation, the contents of the student application guidelines, including the examination schedule, may be changed. If it is necessary to make such changes, we will inform you on our website, and please be sure to check the latest information.
<https://www.u-toyama.ac.jp>

Table of Contents

Admission Policy of the Graduate School of Sustainability Studies (Master's Course).....	1
Admission Overview of the Graduate School of Sustainability Studies (Master's Course).....	2
I. Admission Examination with Recommendation	4
II. General Admission Examination	6
III. Special Admission Examination for Working Adults	8
IV. Comprehensive Admission Examination	9
General Procedure of Application and Admission	
1. Application Procedure	11
2. Examination for Eligibility of Application	18
3. Printing Admission Ticket and Important Notes Regarding the Examination	19
4. Announcement of Successful Applicants	20
5. Admission Procedure	20
6. Precautions	21
7. Security Export Control	21
8. Preliminary Consultation for Applicants with Disabilities	21
9. Policy on Personal Information Protection	21
10. Special Measures for Educational Methods based on Article 14 of the Standards for Establishment of Graduate Schools	22
11. Disclosure of Entrance Examination Information	22
Guide of the Graduate School of Sustainability Studies (Master's Course) ...	23

Admission Policy the Graduate School of Sustainability Studies (Master's Course)

Admission Policy

The Graduate School of Sustainability Studies seeks students who have a strong interest and basic scholastic abilities in academic fields related to a sustainable society such as Data Science and Sustainability Science, and who are willing to contribute to the realization of a sustainable society as a highly specialized professional in the future.

Social Data Science Program

Social Data Science Program seeks students who have basic scholastic abilities and are strongly motivated to study Data Science and AI, and who are willing to contribute to the realization of a sustainable society by utilizing their expertise and special skills in the future.

Global Sustainability Science Program

Global Sustainability Science Program seeks students who have a strong interest in sustainability science and basic scholastic abilities, and who are motivated to become engineers and researchers who can contribute to the construction of a sustainable society by utilizing their expertise and special skills in the future.

Basic policy on selection (admission examination types and their evaluation methods)

○Social Data Science Program

Comprehensive Admission Examination

Each applicant will be comprehensively evaluated based on an interview (including oral questions regarding academic ability) and application documents (such as academic transcripts). The evaluation focuses on the applicant's knowledge acquired up to the undergraduate level, their ability to identify research topics, the knowledge and skills necessary to address them, and their communication and logical thinking skills.

Admission Examination with Recommendation

Each applicant will be comprehensively evaluated based on an interview (including oral questions regarding academic ability) and application documents such as an academic transcript and other relevant materials

○Global Sustainability Science Program

General Admission Examination

Each applicant will be comprehensively evaluated based on a Presentation-based oral examination and application documents such as an academic transcript, external English test score, and other relevant materials.

Admission Examination with Recommendation

Each applicant will be comprehensively evaluated based on a Presentation-based oral examination and application documents such as an academic transcript and other relevant materials.

Special Admission Examination for Working Adults

Each applicant will be comprehensively evaluated based on a Presentation-based oral examination and application documents such as an academic transcript and other relevant materials.

Admission Overview

the Graduate School of Sustainability Studies (Master's Course) for October 2025 Enrollment

Admission Quota

Program name	Admission Quota			
	Admission Examination with Recommendation	General Admission Examination	Special Admission Examination for Working Adults	Comprehensive Admission Examination
Social Data Science Program	-	-	-	A few
Global Sustainability Science Program (Schedule A)	A few	A few	A few	-
Total	A few			

Admission Schedule

- Social Data Science Program

Category	Application period	Examination date	Announcement of Successful Applicants
Comprehensive Admission Examination	Friday, July 11 to Friday, July 18, 2025	Friday, August 22, 2025	Friday, September 5, 2025

- Global Sustainability Science Program

Category	Application period	Examination date	Announcement of Successful Applicants
Admission Examination with Recommendation (Schedule A)	Monday, May 26 to Monday, June 2, 2025	Wednesday, July 2, 2025	Friday, July 18, 2025
General Admission Examination (Schedule A)			
Special Admission Examination for Working Adults (Schedule A)			

Admission Overview

the Graduate School of Sustainability Studies (Master's Course) for April 2026 Enrollment

Admission Quota

Program name	Admission Quota			
Social Data Science Program	Admission Examination with Recommendation		Comprehensive Admission Examination	
	A few		8	
Global Sustainability Science Program	Schedule A			Schedule B
	Admission Examination with Recommendation	General Admission Examination	Special Admission Examination for Working Adults	
	A few	8	A few	2
Total	18			

Note: Schedule B, which includes the Admission Examination with Recommendation, General Admission Examination, and Special Admission Examination for Working Adults, will also be conducted for enrollment in April and October 2026. The application guidelines are scheduled to be published around November 2025.

Admission Schedule

- Social Data Science Program

Category	Application period	Examination date	Announcement of Successful Applicants
Admission Examination with Recommendation	Monday, May 26 to Monday, June 2, 2025	Wednesday, July 2, 2025	Friday, July 18, 2025
Comprehensive Admission Examination	Friday, July 11 to Friday, July 18, 2025	Friday, August 22, 2025	Friday, September 5, 2025

- Global Sustainability Science Program

Category	Application period	Examination date	Announcement of Successful Applicants
Admission Examination with Recommendation (Schedule A)	Monday, May 26 to Monday, June 2, 2025	Wednesday, July 2, 2025	Friday, July 18, 2025
General Admission Examination (Schedule A)			
Special Admission Examination for Working Adults (Schedule A)			

I. Admission Examination with Recommendation

1. Number of students to be admitted

Program	Admission Quota	
	Enrollment in October 2025	Enrollment in April 2026
Social Data Science Program	-	A few
Global Sustainability Science program	A few	A few

2. Eligibility of Application

The applicants shall be those who fulfill any of the following requirements:

- (1) A person who graduated from a Japanese university or is expected to graduate from it by the end of the month preceding enrollment.
- (2) A person who was granted a bachelor's degree or is expected to be granted it by the end of the month preceding enrollment by the National Institution for Academic Degrees and Quality Enhancement of Higher Education pursuant to Article 104, Paragraph 7 of the School Education Act.
- (3) A person who has completed a 16-year course of school education in a foreign country or is expected to complete it by the end of the month preceding enrollment.
- (4) A person who has completed a 16-year course of school education in a foreign country, completed through distance education while residing in Japan conducted by a foreign school or is expected to complete it by the end of the month preceding enrollment.
- (5) A person (limited to a person who completed a 16-year school education course of a foreign country) who has completed the course designated by the Minister of Education, Culture, Sports, Science and Technology in Japan (hereinafter referred to as MEXT) conducted by an educational institution positioned as having a course of a foreign university under the school education system of the foreign country, or is expected to complete it by the end of the month preceding enrollment.
- (6) A person who was granted a degree equivalent to a bachelor's degree by completing a course with a term of study of 3 or more years at a foreign university or another foreign school (limited to those that have been evaluated with regard to the overall status of their educational and research activities, etc. by a person who has got certified by the government or a governmental organization of the foreign country, or those that designated as being equivalent thereto by the Minister of MEXT), or is expected to be granted it by the end of the month preceding enrollment.
In the above "completing a course" includes the completion of the course by taking classes in Japan through distance education conducted by a foreign school, or completion of the course conducted by an educational institution positioned under the school education system of the foreign country as well as designated in the preceding paragraph.
- (7) A person who has completed a specialized course conducted by an advanced vocational school (limited to those fulfilling a term of study of 4 or more years and other criteria specified by the Minister of MEXT) and designated by the Minister of MEXT on or after the day specified by the Minister of MEXT.
- (8) A person designated by the Minister of MEXT (Public notice No. 5 of the Ministry of Education, 1953).
- (9) A person who has been enrolled in a university for 3 or more years or has completed a 15-year school education course in a foreign country by the end of the month preceding enrollment and has been recognized by the Graduate School of Sustainability Studies as having acquired the designated credits with an excellent academic record.
- (10) A person from a foreign country that does not require 16 years for university graduation or a person equivalent thereto, who fulfills the following 2 requirements and is recognized by the Graduate School of Sustainability Studies as having academic ability equivalent to or higher than that of Japanese university graduates:
 - a. A person who after completing university education, has been engaged in research for approximately 1 or more years as a research student, researcher, etc. or is expected to be engaged in research as a research student, researcher, etc. for approximately 1 or more years by the end of the month preceding enrollment at a university, an inter-university research institute corporation or equivalent research institution in Japan or a foreign country.
 - b. A person who will have turned 22 years old by the end of the month preceding enrollment.
- (11) A person who has been recognized by the Graduate School of Sustainability Studies as having academic ability equivalent to or higher than that of Japanese university graduates through an individual examination of eligibility for application and will have turned 22 years old by the end of the month preceding enrollment.

(Note) A person who intends to file an application in accordance with the Eligibility of Application (9), (10), or (11) is required to undergo an individual Examination for Eligibility of Application in advance. See "2. Examination for Eligibility of Application" on page 18.

3. Selection methods

Social Data Science Program

- (1) Each applicant will be comprehensively evaluated based on their academic transcripts (100 points) and the results of the interview (including oral questions regarding academic ability) (100 points). The oral questions will mainly focus on the applicant's specialized knowledge.
- (2) Examination Venue: University of Toyama, Gofuku Campus (3190 Gofuku, Toyama City, Toyama)
Applicants who reside overseas and are unable to come to the University of Toyama due to unavoidable circumstances may take the examination online.
- (3) Examination date and subjects

Date	Time	Examination Subjects
Wednesday, July 2, 2025	From 9:30	Interview (Including oral questions regarding academic ability)

Global Sustainability Science Program

- (1) Each applicant will be comprehensively evaluated based on their academic transcripts (300 points) and the results of the Presentation-based oral examination (700 points).
- (2) Examination Venue: University of Toyama, Gofuku Campus (3190 Gofuku, Toyama City, Toyama)
Applicants who reside overseas and are unable to come to the University of Toyama due to unavoidable circumstances may take the examination online.
- (3) Examination date and subjects

Date	Time	Examination Subjects
Wednesday, July 2, 2025	From 9:30	Presentation-based oral examination

II. General Admission Examination

1. Number of students to be admitted

Program	Admission Quota	
	Enrollment in October 2025	Enrollment in April 2026
Global Sustainability Science program	A few	8

2. Eligibility of Application

The applicants shall be those who fulfill any of the following requirements:

- (1) A person who graduated from a Japanese university or is expected to graduate from it by the end of the month preceding enrollment.
- (2) A person who was granted a bachelor's degree or is expected to be granted it by the end of the month preceding enrollment by the National Institution for Academic Degrees and Quality Enhancement of Higher Education pursuant to Article 104, Paragraph 7 of the School Education Act.
- (3) A person who has completed a 16-year course of school education in a foreign country or is expected to complete it by the end of the month preceding enrollment.
- (4) A person who has completed a 16-year course of school education in a foreign country, completed through distance education while residing in Japan conducted by a foreign school or is expected to complete it by the end of the month preceding enrollment.
- (5) A person (limited to a person who completed a 16-year school education course of a foreign country) who has completed the course designated by the Minister of MEXT conducted by an educational institution positioned as having a course of a foreign university under the school education system of the foreign country, or is expected to complete it by the end of the month preceding enrollment.
- (6) A person who was granted a degree equivalent to a bachelor's degree by completing a course with a term of study of 3 or more years at a foreign university or another foreign school (limited to those that have been evaluated with regard to the overall status of their educational and research activities, etc. by a person who has got certified by the government or a governmental organization of the foreign country, or those that designated as being equivalent thereto by the Minister of MEXT), or is expected to be granted it by the end of the month preceding enrollment.

In the above "completing a course" includes the completion of the course by taking classes in Japan through distance education conducted by a foreign school, or completion of the course conducted by an educational institution positioned under the school education system of the foreign country as well as designated in the preceding paragraph.

- (7) A person who has completed a specialized course conducted by an advanced vocational school (limited to those fulfilling a term of study of 4 or more years and other criteria specified by the Minister of MEXT) and designated by the Minister of MEXT on or after the day specified by the Minister of MEXT.
- (8) A person designated by the Minister of MEXT (Public notice No. 5 of the Ministry of Education, 1953).
- (9) A person who has been enrolled in a university for 3 or more years or has completed a 15-year school education course in a foreign country as of the end of the previous month for enrollment and has been recognized by the Graduate School of Sustainability Studies as having acquired the designated credits with an excellent academic record.
- (10) A person from a foreign country that does not require 16 years for university graduation or a person equivalent thereto, who fulfills the following 2 requirements and is recognized by the Graduate School of Sustainability Studies as having academic ability equivalent to or higher than that of Japanese university graduates:
 - a. A person who after completing university education, has been engaged in research for approximately 1 or more years as a research student, researcher, etc. or is expected to be engaged in research as a research student, researcher, etc. for approximately 1 or more years by the end of the month preceding enrollment at a university, an inter-university research institute corporation or equivalent research institution in Japan or a foreign country.
 - b. A person who will have turned 22 years old by the end of the month preceding enrollment.
- (11) A person who has been recognized by the Graduate School of Sustainability Studies as having academic ability equivalent to or higher than that of Japanese university graduates through an individual examination of eligibility for application and will have turned 22 years old by the end of the month preceding enrollment.

(Note) A person who intends to file an application in accordance with the Eligibility of Application (9), (10), or (11) is required to undergo an individual Examination for Eligibility of Application in advance. See "2. Examination for Eligibility of Application" on page 18.

3. Selection methods

- (1) Each applicant will be comprehensively evaluated based on their academic transcripts (100 points), any valid external English test score (200 points), and the result of the Presentation-based oral examination (700 points).

As for external English proficiency tests, the converted score will be doubled to make a total of 200 points. The converted score, with a full score of 100 points, will be calculated based on the following conversion formulas:

- **TOEIC Listening & Reading Public Test / TOEIC-IP**

Score of 730 or higher: **100 points**

If the score is below 730:

$$\text{Converted Score} = 100 \times (\text{TOEIC score}) / 730$$

- **TOEFL iBT**

Score of 70 or higher: **100 points**

If the score is below 70:

$$\text{Converted Score} = 100 \times (\text{TOEFL iBT score}) / 70$$

- **TOEFL ITP**

Score of 525 or higher: **100 points**

If the score is below 525:

$$\text{Converted Score} = 100 \times \{(\text{TOEFL ITP score}) - 310\} / 215$$

Score of 310 or lower: 0 points

- **IELTS**

The converted score, with a full score of 100 points, will be calculated based on the following formula:

Score of 6.0 or higher: **100 points**

If the score is below 6.0:

$$\text{Converted Score} = 100 \times \{(\text{IELTS score}) - 1\} / 5$$

- **Results of other English proficiency tests (with verifiable scores)**

Scores will be converted based on the scale specified by the Global Sustainability Science Program.

Converted scores are rounded to the nearest whole number (rounding off the first decimal place).

- (2) Examination Venue: University of Toyama, Gofuku Campus (3190 Gofuku, Toyama City, Toyama)
Applicants who reside overseas and are unable to come to the University of Toyama due to unavoidable circumstances may take the examination online.
- (3) Examination date and subjects

Date	Time	Examination Subjects
Wednesday, July 2, 2025	From 9:30	Presentation-based oral examination

III. Special Admission Examination for Working Adults

1. Number of students to be admitted

Program	Admission Quota	
	Enrollment in October 2025	Enrollment in April 2026
Global Sustainability Science Program	A few	A few

2. Eligibility of Application

Applicants shall be those who have 1 or more years of working experience (excluding a period of attending a university or another school) by the end of the month preceding enrollment and fulfill any of the following requirements:

- (1) A person who graduated from a Japanese university.
- (2) A person who was granted a bachelor's degree pursuant to Article 104, Paragraph 7 of the School Education Act.
- (3) A person who has completed a 16-year course of school education in a foreign country.
- (4) A person who has completed a 16-year course of school education in a foreign country, completed through distance education while residing in Japan conducted by a foreign school.
- (5) A person (limited to a person who completed a 16-year school education course of a foreign country) who has completed the course designated by the Minister of MEXT conducted by an educational institution positioned as having a course of a foreign university under the school education system of the foreign country.
- (6) A person who was granted a degree equivalent to a bachelor's degree by completing a course with a term of study of 3 or more years at a foreign university or another foreign school (limited to those that have been evaluated with regard to the overall status of their educational and research activities, etc. by a person who has got certified by the government or a governmental organization of the foreign country, or those that designated as being equivalent thereto by the Minister of MEXT).

In the above "completing a course" includes the completion of the course by taking classes in Japan through distance education conducted by a foreign school, or completion of the course conducted by an educational institution positioned under the school education system of the foreign country as well as designated in the preceding paragraph.

- (7) A person designated by the Minister of MEXT (Public notice No. 5 of the Ministry of Education, 1953).
- (8) A person who has been recognized by the Graduate School of Sustainability Studies as having academic ability equivalent to or higher than that of Japanese university graduates through an individual examination of eligibility for application and will have turned 22 years old by the end of the month preceding enrollment.

(Note) A person who intends to file an application in accordance with the Eligibility of Application (8) is required to undergo an individual Examination for Eligibility of Application in advance. See "2. Examination for Eligibility of Application" on page 18.

3. Selection methods

- (1) Each applicant will be comprehensively evaluated based on their academic transcripts (300 points) and the results of the Presentation-based oral examination (700 points).
- (2) Examination Venue: University of Toyama, Gofuku Campus (3190 Gofuku, Toyama City, Toyama)
Applicants who reside overseas and are unable to come to the University of Toyama due to unavoidable circumstances may take the examination online.
- (3) Examination date and subjects

Date	Time	Examination Subjects
Wednesday, July 2, 2025	From 9:30	Presentation-based oral examination

IV. Comprehensive Admission Examination

1. Number of students to be admitted

Program	Admission Quota	
	Enrollment in October 2025	Enrollment in April 2026
Social Data Science Program	A few	8

2. Eligibility of Application

The applicants shall be those who fulfill any of the following requirements:

- (1) A person who graduated from a Japanese university or is expected to graduate from it by the end of the month preceding enrollment.
- (2) A person who was granted a bachelor's degree or is expected to be granted it by the end of the month preceding enrollment by the National Institution for Academic Degrees and Quality Enhancement of Higher Education pursuant to Article 104, Paragraph 7 of the School Education Act.
- (3) A person who has completed a 16-year course of school education in a foreign country or is expected to complete it by the end of the month preceding enrollment.
- (4) A person who has completed a 16-year course of school education in a foreign country, completed through distance education while residing in Japan conducted by a foreign school or is expected to complete it by the end of the month preceding enrollment.
- (5) A person (limited to a person who completed a 16-year school education course of a foreign country) who has completed the course designated by the Minister of MEXT conducted by an educational institution positioned as having a course of a foreign university under the school education system of the foreign country, or is expected to complete it by the end of the month preceding enrollment.
- (6) A person who was granted a degree equivalent to a bachelor's degree by completing a course with a term of study of 3 or more years at a foreign university or another foreign school (limited to institutions that have been evaluated on the overall status of their educational and research activities by a person who has got certified by the government or a governmental organization of the foreign country, or those that designated as being equivalent thereto by the Minister of MEXT), or is expected to be granted it by the end of the month preceding enrollment.

In the above "completing a course" includes the completion of the course by taking classes in Japan through distance education conducted by a foreign school, or completion of the course conducted by an educational institution positioned under the school education system of the foreign country as well as designated in the preceding paragraph.

- (7) A person who has completed a specialized course conducted by an advanced vocational school (limited to those fulfilling a term of study of 4 or more years and other criteria specified by the Minister of MEXT) and designated by the Minister of MEXT on or after the day specified by the Minister of MEXT.
- (8) A person designated by the Minister of MEXT (Public notice No. 5 of the Ministry of Education, 1953).
- (9) A person who has been enrolled in a university for 3 or more years or has completed a 15-year school education course in a foreign country as of the end of the previous month for enrollment and has been recognized by the Graduate School of Sustainability Studies as having acquired the designated credits with an excellent academic record.
- (10) A person from a foreign country that does not require 16 years for university graduation or a person equivalent thereto, who fulfills the following 2 requirements and is recognized by the Graduate School of Sustainability Studies as having academic ability equivalent to or higher than that of Japanese university graduates:
 - a. A person who after completing university education, has been engaged in research for approximately 1 or more years as a research student, researcher, etc. or is expected to be engaged in research as a research student, researcher, etc. for approximately 1 or more years by the end of the month preceding enrollment at a university, an inter-university research institute corporation or equivalent research institution in Japan or a foreign country.
 - b. A person who will have turned 22 years old by the end of the month preceding enrollment.
- (11) A person who has been recognized by the Graduate School of Sustainability Studies as having academic ability equivalent to or higher than that of Japanese university graduates through an individual examination of eligibility for application and will have turned 22 years old by the end of the month preceding enrollment.

(Note) A person who intends to file an application in accordance with the Eligibility of Application (9), (10), or (11) is required to undergo an individual Examination for Eligibility of Application in advance. See "2. Examination for Eligibility of Application" on page 18.

3. Selection methods

- (1) Each applicant will be comprehensively evaluated based on the results of the interview (including oral questions regarding academic ability) (200 points) and the application documents (such as academic transcripts) (100 points). The evaluation will assess, in an integrated manner, the knowledge acquired up to the undergraduate level, the ability to identify research topics in a master's program and the knowledge and skills necessary to address them, communication skills, and logical thinking ability. The oral questions will mainly focus on the applicant's specialized knowledge.
- (2) Examination Venue: University of Toyama, Gofuku Campus (3190 Gofuku, Toyama City, Toyama)
Applicants who reside overseas and are unable to come to the University of Toyama due to unavoidable circumstances may take the examination online.
- (3) Examination date and subjects

Date	Time	Examination Subjects
Friday, August 22, 2025	From 9:30	Interview (Including oral questions regarding academic ability)

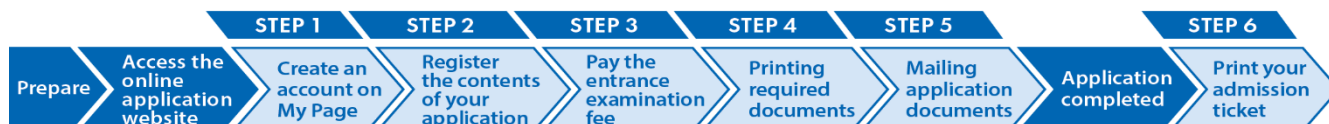
General Procedure of Application and Admission

1. Application Procedure

Applications must be submitted online only. The application procedure is completed by sending the required documents by registered express mail within the application period after the registration and payment of the examination fee on the online application website.

Please read the following "Online Application Procedure" carefully and follow the instructions.

Online Application Procedure



Prepare

see page 15

Prepare a PC with an Internet connection and a printer, etc. It may take time for the required documents* to be issued. Please start preparing them early and ensure that you have them with you before applying.

*Required Documents : An official transcript, data of your photo, etc.
For details, refer to page 15 of the application guidelines.



Access the Online Application Website

Access from the Online Application website
or
the University website

<https://e-apply.jp/ds/toyama-gs/>

<https://www.u-toyama.ac.jp/>



After completing registration on the Internet application site (STEP 2), the application is completed by paying the examination fee (STEP 3), printing and mailing the required documents (STEP 4, STEP 5).

Please note that your application is not complete just by registering.

Online applications are available 24 hours a day.

However, application documents must arrive by 16:00 on the last day of the application period.

Please make sure to give yourself plenty of time when applying.

STEP 1

Create an Account on My Page

Enter the required information according to the instructions on the screen to create an account on My Page. If you have already registered on My Page, proceed to STEP 2.



① If you are registering for the first time, click
My Page Registration



② Register your e-mail address and click on
Send an e-mail for temporary registration



③ Click on the
To the log-in page from the user registration screen.



④ A default password and a registration URL will be sent to your registered e-mail address.

*Configure your e-mail settings to receive e-mails from the @e-apply.jp domain.



⑤ From the log-in screen, use your registered e-mail address and the default password you received in step ④ and click
log-in



⑥ Change your default password.



⑦ Enter your personal information and click
Next



⑧ Confirm your personal information and click
Register this information



⑨ Registration is complete. Click
To My Page



⑩ When the above page appears,
My Page registration is complete.

* You can proceed to the application procedures by clicking on the **Apply** button only while applications are being accepted. You cannot proceed from here onward during times outside the period. Click on the **Log-out** button.

STEP

2

Register the Contents of Your Application

Make sure to check the procedures and important notices on the screen, and then enter the required fields according to the instructions on the screen.



① After logging in to My Page,
click on the **Apply** button,
and the registration page will
appear.



② Select an entrance exam and
confirm the important notices.



③ Select the desired department,
etc.



④ Upload a photo.
Click on the **Select Photo** button to select a photo.



⑤ Enter your information
entrance (name, address, etc.).



⑥ Confirm the contents of your
application.
Click on the **Application Form (sample)**
button to check your application form.



⑦ Your application is registered.
Click on the **Pay**
button to proceed to the page where
you can pay your entrance
examination fee.



⑧ Payment methods for
examination fees.
● Convenience stores
● ATMs with Pay-easy
● Online banking
● Credit cards



⑨ Document required for the application in PDF format
(Sample)

*This document can be printed out after the entrance examination fee is paid.

If you have selected "Convenience Stores" or "ATMS with Pay-easy" as your payment method, write down the payment number, which will appear after the selection of a payment method, in the memo space below, and make the payment at a convenience store or an ATM with Pay-easy within the designated payment deadline.

For 7-ELEVEN

Payment slip
number
Memo (13 digits)

For Daily YAMAZAKI, Seicomart

Online payment
number by
Memo (11 digits)

For LAWSON, MINISTOP, FamilyMart, ATMS with Pay-easy

Customer
number memo
(11 digits)

Confirmation
number memo
(6 digits)

Receiving agency
number (5 digits) 5 8 0 2 1

* A receiving agency number is
required for payment Pay-easy.

A confirmation e-mail will be sent to you after the application registration is completed. If you have restricted the reception of e-mails, please allow e-mails from the sender (@e-apply.jp) to be received. *Please note that confirmation e-mails may be sorted into your junk e-mail folder, etc.

Please be careful not to enter incorrect information, as the registered information cannot be changed or modified after the application registration is completed. However, if you have not yet paid the entrance examination fee, you can substantially modify the information by re-registering using the correct information.

*Please note that if you have selected a credit card for the "Payment Method for the Entrance Examination Fee," the payment will be completed simultaneously with the registration for application.

STEP

3



Pay the Entrance Examination Fee

1 Credit Card Payment

You can select this method and make a payment when registering your application.

[Accepted Credit Cards]

VISA, Master, JCB, AMERICAN EXPRESS, MUFG Card, DC Card, UFJ Card, NICOS Card



Payment is completed upon registration.

2 Online Banking Payment

After registering your application, you will be redirected to the page of each financial institution from the current page. Please follow the instructions on the screen to make the payment.

*For online payment, your bank account must be signed up for internet banking.

The procedures are completed online.

3 Convenience Store Payment

Payment at a convenience store can be made using the payment number that will appear after you have registered the application information.

● Payment can be made at a cash register.

● Payment can be made using a store terminal.



Loppi



Multi-functional copy machine

あなあん、コンビニ、FamilyMart



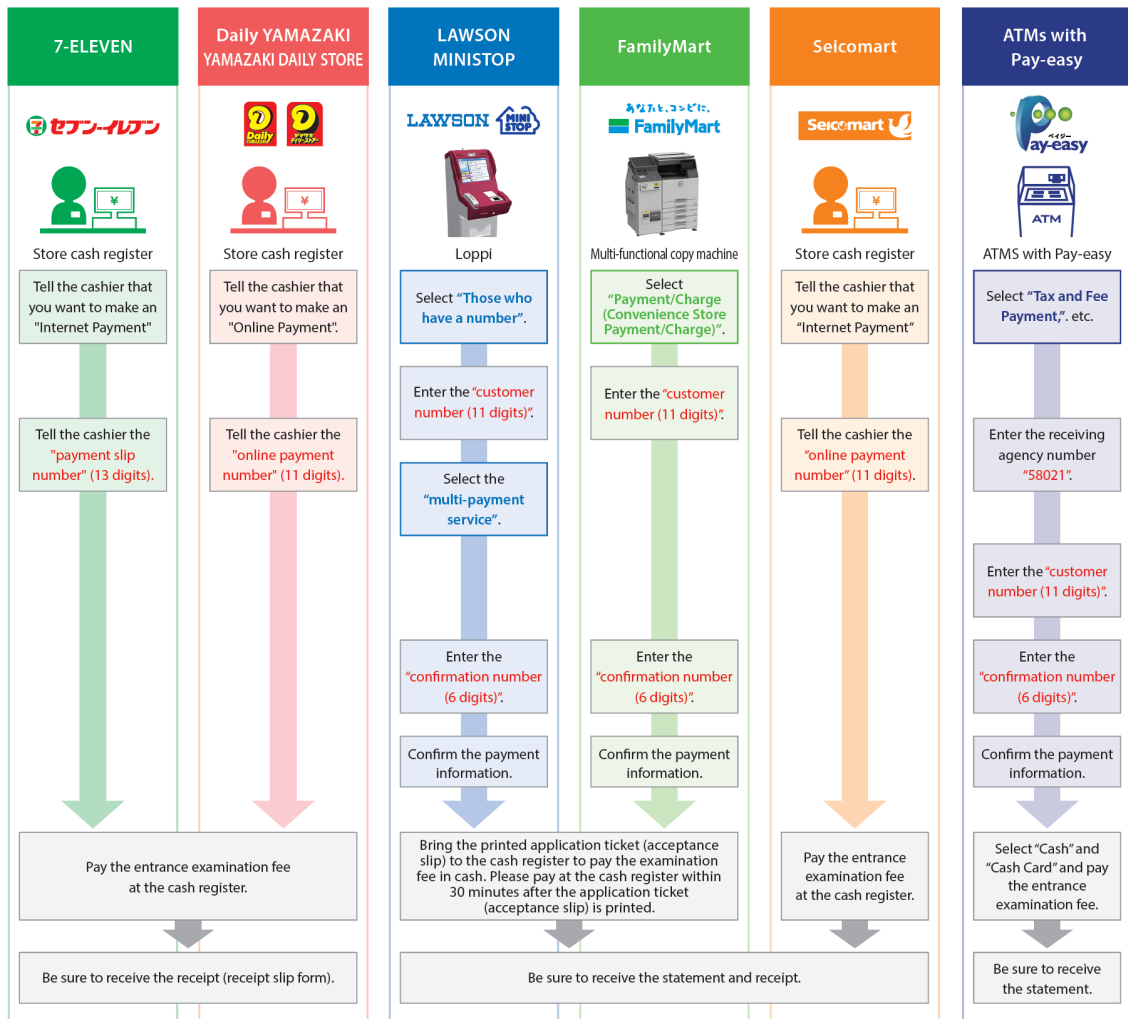
4 Bank ATMs with Pay-easy

Payment can be made using the payment number that will appear after you have registered the application information at bank ATMs with Pay-easy by following the instructions on the ATM screen.

*Please check the "Payment Method Selection" screen to see the banks that offer this payment method.

Enter the required information following the instructions on the screen of each convenience store terminal or ATM and confirm the details before paying the entrance examination fee.

3 Convenience Stores



STEP

4



Printing required documents

Please log in from the "Confirm Application/Print Application Form" button and print the application form and other required documents in color on A4 paper.

Application form PDF (image)

STEP

5



Mailing application documents

Please note that your application is not complete just by registering.

Please send the documents required for the application by "Registered express mail" from the post office window during the application period.

Application Documents

One copy is required for each application registration.

Please refer to pages 17 of the university's application guidelines to prepare the documents required for application.

<Deadline for submission of application documents>

- Social Data Science Program
Admission Examination with Recommendation
Monday, June 2, 2025 4:00 p.m.
Comprehensive Admission Examination
Friday, July 18, 2025 4:00 p.m.
- Global Sustainability Science Program
(Schedule A)
Admission Examination with Recommendation
Monday, June 2, 2025 4:00 p.m.
General Admission Examination
Monday, June 2, 2025 4:00 p.m.
Special Admission Examination for Working Adults
Monday, June 2, 2025 4:00 p.m.



Address sheet



Post office window

The mailing address for the application documents is automatically printed on the address sheet.

Paste the address sheet on a commercially available square No. 2 envelope (240mm x 332mm) please.

Once received, the application fee and application documents will not be returned except for reasons specified in the application guidelines.

< Application completed >

We will not respond to any inquiries regarding acceptance by telephone or other means.

STEP

6



Print your admission ticket

see page 19

You will be able to print your admission ticket from the online application site after the date of issuance of your admission ticket. Please log in from the "Print Examination Ticket" button and print it. Be sure to print the admission ticket in color on A4 paper and bring it with you on the day of the examination.

(1) **Advance preparation**

Documents, etc.	Summary
Recommended System Environments	<p>Recommended Browsers for PC</p> <ul style="list-style-type: none"> • Microsoft Edge (latest version) • Google Chrome (latest version) • Mozilla Firefox (latest version) • Apple Safari (latest version) <p>Note: If you perform application procedures simultaneously in multiple browser tabs using the tab function, the selected content may be carried over to other tabs or other issues may occur. Please refrain from using multiple tabs at the same time. To return to the previous screen, please use the “Back” button displayed on the screen, instead of your browser’s Back button.</p> <p>Recommended Browsers and Operating Systems for Smartphones and Tablets</p> <ul style="list-style-type: none"> • iOS 12 or later • Android OS 8 or later • iPadOS 13 or later <p>Notes:</p> <ul style="list-style-type: none"> • The standard browser for each OS is recommended. • If the screen does not display properly in your current browser, please try accessing it using a different browser. • When using an Android smartphone, PDFs may not display correctly in the PC version of Chrome. Please use the mobile version instead.
PDF display and printing software	To view and print the Application Form (PDF), Adobe Acrobat Reader (free of charge), distributed by Adobe Systems, is required.
Email address	<p>An e-mail address is required for application, so please prepare it in advance. If you have set up a domain name filter, please check the following domains. Please add your settings so that you can receive emails. @e-apply.com</p> <p>If you are registering an e-mail address issued by a smartphone or cell phone carrier, please follow the instructions of your carrier's spam filtering system to ensure that you receive e-mails from @e-apply.jp.</p>
Photograph of the applicant	<p>Please prepare a photo of your face in a file format (jpeg, jpg, png, bmp) up to 10 MB in size. The preferred photo size is a ratio of 4 (height) x 3 (width). Photographs will be used for identification purposes.</p> <p>Please prepare a color photograph (front, upper body, hatless, no background) taken within 3 months prior to the application.</p> <p>Examples of photographs that cannot be used</p> <p>Blurred (blurred, shadows), not background-free (scenery in the background, patterns in the background), difficult to identify (makeup, bangs over eyes, etc.), photo has been altered, developed photo has been re-photographed, etc.</p>
Printer	<p>A color printer capable of printing on plain A4 paper is required to print out the application form and the admission ticket (PDF).</p> <p>Please prepare this along with printing paper (plain paper, PPC paper, common OA paper, copy paper, etc.).</p>
Kakugata 2 envelope (240 mm x 332 mm)	Please prepare a commercially available kakugata 2 envelope (240 mm x 332 mm) for mailing the application documents such as the application form. Please use the "address sheet" printed out when you print out the application form and paste it on the envelope.

(2) Application period

Social Data Science Program

Category	Application period
Admission Examination with Recommendation	Monday, May 26 to Monday, June 2, 2025 by 16:00
Comprehensive Admission Examination (Including enrolment in October 2025.)	Friday, July 11 to Friday, July 18, 2025 by 16:00

Global Sustainability Science program

Category	Application period
Schedule A (Including enrolment in October 2025.)	Monday, May 26 to Monday, June 2, 2025 by 16:00

Registration for online application and payment of the examination fee (30,000 yen) will be available from 9:00 a.m. on the first day of the filing period.

All documents required for application must be sent by registered express mail (EMS, or other traceable means of mailing from abroad) so that they arrive by the application deadline. Applications submitted in person will not be accepted. Please send your application well in advance of the application deadline, considering the postal service conditions.

Please note that applications arriving after the application period will not be accepted. However, only registered express mail postmarked on or before the day before the application deadline (limited to postmarked mail within Japan) will be accepted even if it arrives after the application period.

Please note that the University will not respond to inquiries as to whether the application envelopes sent by registered express mail have arrived at the University. Applicants are requested to confirm the arrival of the application envelopes by using the "Mail Tracking Service" on the Japan Post's website.

Applicants are required to consult in advance with the prospective advisor of the program/educational field they wish to apply for, in order to confirm that their intended research plan aligns with the advisor's area of research.

(3) Examination fee 30,000 yen

Payment of the examination fee will be made after the completion of STEP 2 "Registration of Application Details" of the online application process, and the payment must be made according to STEP 3 "Payment of Examination fee. After payment of the examination fee, you will be able to print out the application form and other documents. Japanese Government Scholarship students are not required to pay the examination fee.

Please note that an additional handling fee, paid by the applicant, is required at the time of payment.

An examination fee waiver is available for individuals affected by natural disasters. For more details, please refer to the university's website.

The examination fee, once received, will not be refunded except in the following cases.

- ① If you paid the examination fee but did not apply to the University of Toyama (you did not submit the required documents or your application wasn't accepted) 《Refund Amount》 30,000 yen
- ② In case of double payment of the examination fee 《Refund Amount》 30,000 yen
- ③ If you overpaid the examination fee. 《Refund Amount》 The overpaid amount.

However, the recipient is responsible for the bank transfer fee when the examination fee is refunded.

(Note) Method of claiming

Please fill out the "Application for Refund of Examination fee" (designated form) and send it to the University by mail.
Send to: **Accounting Division I of Finance and Facilities Department, University of Toyama, 3190 Gofuku, Toyama City, Toyama Prefecture 930-8555, Japan**
Phone +81-(0)76-445-6053

(4) Application documents

Please send the following required documents by registered express mail (EMS, or other traceable means of mailing from abroad) in an envelope with an "address sheet" attached.

i. Documents to be printed from the online application website

Documents, etc.		Summary
1	Application for admission	Please print in color in A4 size from the Internet application website. Printing will be available after payment of the examination fee.
2	Address sheet	Please print in color in A4 size from the Internet application website. Please affix it to a commercially available kakugata 2 envelopes (240mm x 332mm) without peeling off.
3	Pledge (prescribed form)	The applicant must sign and submit a written pledge to comply with the "Foreign Exchange and Foreign Trade Law" 7 Security Export Control" on page 21.

(Note) Be sure to check the printed information for errors.

ii. Documents to be prepared by the applicant

Documents, etc.		Summary
1	Certificate of (expected) graduation	A document prepared by the president or dean of the university from which the applicant graduated. (Note that applicants who are expected to graduate from the University of Toyama do not need to submit this form.)
2	Certificate of degree Conference or certificate of (planned) application for degree conferment	Only those who meet the requirements for application (2) need to submit the application form. Certificate of (planned) application for degree conferment issued by the National Institution for Academic Degrees and University Reform, or by the president of the junior college or the president of the college of technology
3	Academic transcript	A copy prepared by the president, dean, or academic advisor of the applicant's home university and securely sealed. If the applicant is currently employed by a government agency, company, or other organization, the document must be prepared and sealed by the head of the organization.
4	Copy of TOEIC/TOEFL score sheet (*If you are a foreign national and have not taken TOEIC/TOEFL, please submit the results of other tests that show your English proficiency test that includes a score report.)	Only applicants for General Admission Examination Please submit a copy (A4 size) of one of the score sheets (1) through (4) below. However, if you have more than one score sheet, you may submit up to two copies. (*If you are a foreign national and have not taken TOEIC/TOEFL, please submit the results of other tests that show your English proficiency test that includes a score report. (1) TOEIC Listening & Reading Official Score Certificate (2) TOEIC-IP score report (individual score report) (3) Test Taker (Examinee) Score Report for the TOEFL iBT (4) TOEFL-ITP score report Please note that score sheets must be issued for tests taken on or after April 1, 2022. Please be sure to bring the original documents with you so that we can verify them on the day of the examination. If you do not bring the original score sheet, you will become ineligible for the selection.
5	Recommendation (prescribed form)	Only applicants for Admission Examination with Recommendation and the Special Entrance Examination for Working Adults A copy prepared and strictly sealed by the president (dean), principal, or academic advisor of the applicant's home university. For those who are currently employed at a public office or company, a copy is prepared and strictly sealed by the head of the organization.
6	Statement of Purpose (prescribed form)	To be completed by the applicant
7	Research plan (prescribed form)	To be completed by the applicant
8	Copy of certified certificate of residence	Only applicants with non-Japanese nationality If you are currently residing in Japan, please submit the one issued by the mayor of the city/town/village (the one clearly indicating your status of residence) or copy of residence card.

(Note) For documents written in foreign languages other than English, please attach a Japanese or English translation.

2. Examination for Eligibility of Application

Applicants who intend to apply under Eligibility categories (9), (10), or (11) for the Admission Examination with Recommendation, General Admission Examination, or Comprehensive Admission Examination, or under category (8) for the Special Admission Examination for Working Adults, must undergo a preliminary individual screening for eligibility.

Please contact the office below in advance and submit the required documents by the specified deadline.

[Inquiry and Submission]

Examination Section of Admissions Office, School of Science, Academic and Student Affairs Division of Science and Engineering, University of Toyama, 3190 Gofuku, Toyama City, Toyama Prefecture, 930-8555, Japan

Phone: +81-(0)76-445-6546

(1) Documents necessary for the Examination for Eligibility of Application

- [1] Application for the Examination for Eligibility of Application (Designated form)
- [2] Certificate of Enrollment or Certificate of (Expected) bachelor's degree
- [3] Academic Transcript
- [4] Curriculum Vitae (Designated form, only for foreign applicants)
- [5] Self-addressed return envelope (23.5 cm × 12 cm)

Write your name, address, and postal code clearly on the envelope, and attach sufficient postage for standard (express) delivery.

- [6] Other Necessary Documents

Applicants falling under the Eligibility of Application (9) for Comprehensive Admission Examination, and General Admission Examination

Letter of Recommendation (Designated form)

Curriculum Table of the faculty the applicant belongs to

Applicants falling under the Eligibility of Application (10) for Comprehensive Admission Examination, and General Admission Examination.

Document certifying that the applicant was engaged as a research student, researcher, etc.

Applicants falling under Eligibility of Application (11) for Comprehensive Admission Examination, General Admission Examination, and applicants falling under the Eligibility of Application (8) for Special Admission Examination for Working Adults

Job Performance Report (Designated form)

(Note) Submit the original documents. Copies will not be accepted.

Documents written in a foreign language other than English must be accompanied by documents translated into Japanese or English.

(2) Deadline for the submission of documents

Social Data Science Program

Category	Deadline
Admission Examination with Recommendation	Friday, May 9, 2025 by 16:00
Comprehensive Admission Examination (Including enrolment in October 2025.)	Friday, June 20, 2025 by 16:00

Global Sustainability Science program

Category	Deadline
Schedule A (Including enrolment in October 2025.)	Friday, May 9, 2025 by 16:00

In principle, the application documents shall be submitted by mail and must reach the university by the above-

mentioned period. If an applicant brings the application documents in person to the university for some inevitable reason, we will accept them between 9:00 and 16:00. (We cannot accept them on Saturdays, Sundays, and national holidays.) We cannot accept the application documents after the expiration of the application period.

If the applicant is applying from abroad, contact the following address in advance.

Reference/Submission:

Examination Section of Admissions Office, School of Science, Academic and Student Affairs Division of Science and Engineering, University of Toyama, 3190 Gofuku,
Toyama City, Toyama Prefecture, 930-8555, Japan E-mail: rikyoumu@adm.u-toyama.ac.jp

(3) Notification of the examination results

We will send a notification of the result of the Examination for Eligibility of Application to the applicant by the day before the start of accepting applications for entrance examination.

3. Printing Admission Ticket and Important Notes Regarding the Examination

- (1) After the University receives the application documents sent by the applicant, the admission ticket will become available for printing on the online application website on or after the designated issuance date. When the admission ticket becomes available for printing, a notification will be sent to the applicant's email address registered at the time of online application.

The admission ticket is scheduled to be issued approximately one week before the examination date.

(Note) The issuance date is tentative and subject to change.

- (2) Log in to My Page from "Login" on the online application website. To log in, you will need [your e-mail address and the password you set yourself].
- (3) After logging in, download the admission ticket. Print it in color on A4 paper and be sure to bring it with you on the day of the examination. The admission ticket will be printed together with important notes regarding the examination. Please read them carefully in advance.

Precautions

- (1) After printing the admission ticket, be sure to check the information on it. If the information on the application form is different from what you registered, please contact the Admissions Office (Office of the Faculty of Science and Technology) immediately.
Also, make sure that the examination number displayed on your screen matches the one on your printed admission ticket.
- (2) Even if you do not receive an e-mail, please log in to the online application website and print out the admission ticket and instructions for the examination.
- (3) The number you received when you registered your application online is not your examination number.
- (4) On the day of the examination, smartphones and other devices will not be allowed to display the admission ticket on their screens. Please be sure to bring the printed admission ticket and keep it in a safe place after the examination.

4. Announcement of Successful Applicants

On the following date and time, the examination numbers of Successful Applicants will be posted on the University of Toyama website, and a letter of acceptance will be sent by mail to each successful applicant. Please note that we do not respond to inquiries regarding the results by telephone or any other means.

Social Data Science Program

Category	Date of Announcement of Successful Applicants
Admission Examination with Recommendation	Friday, July 18,2025 at 15:00
Comprehensive Admission Examination (Including enrolment in October 2025.)	Friday, September 5,2025 at 15:00

Global Sustainability Science program

Category	Date of Announcement of Successful Applicants
Schedule A (Including enrolment in October 2025.)	Friday, July 18,2025 at 15:00

5 .Admission Procedure

The admission procedure is as follows, but the details will be notified to the Successful Applicants.

(1) Admission procedure period

Category	Date of Admission Procedures
Enrollment in October 2025 Social Data Science Program Comprehensive Admission Examination Global Sustainability Science Program Schedule A	Friday, September 12,2025
Enrollment in April 2026 Social Data Science Program Admission Examination with Recommendation Comprehensive Admission Examination Global Sustainability Science Program Schedule A	Wednesday, January 21,2026

(2) Expenses required at the time of the admission procedure

a. Enrollment Fee: 282,000 yen (Subject to change)

The Enrollment Fee shown above is the planned amount. If it is revised at the time of enrollment, the new Enrollment Fee will apply.

The paid Enrollment Fee will not be refunded.

To cancel the admission to University of Toyama, you must notify University of Toyama in writing (Any form acceptable).

b. Others

The Successful Applicants must pay other expenses, including the fee for the Personal Accident Insurance for Students Pursuing Education and Research.

(3) If you do not complete the admission procedure within the admission procedure period, you will be considered to have declined the admission.

(4) Students must pay the Tuition Fee by account transfer after enrollment.

The exact amount of the Tuition Fee and detailed method of payment will be announced at the time of the admission procedure.

The Tuition Fee of academic year 2025 amounted to 535,800 yen.

(5) Students who have any of the following conditions may apply for and may be granted full or partial exemption of the Enrollment Fee or the Tuition Fee.

[1] Students with an excellent academic record have difficulty paying the fees because of financial reasons.

[2] Students who find it extremely difficult to pay the fees because of the death of the financial sponsor or an unpredictable circumstance such as natural disasters.

(6) Students who wish to lend a scholarship may be applied for and selected for a scholarship from organizations such as the Japan Student Services Organization.

6.Precautions

- (1) Application may not be accepted if applicants fail to submit any of the required documents.
- (2) Application documents cannot be changed once submitted. They will not be returned under any circumstances, unless otherwise explicitly stated.
- (3) Applicants who do not take all the required examinations will be automatically disqualified from the selection process. Be sure to bring the Examination Admission Ticket to the examination.
- (4) If false statements are made in the application documents, admission may be revoked even after the applicant has been admitted.
- (5) The use of AI such as ChatGPT in documents prepared by applicants themselves (e.g. statement of purpose) is prohibited.

7.Security Export Control

University of Toyama has established the "University of Toyama Security Export Control Regulations" based on the Foreign Exchange and Foreign Trade Act and conducts strict screening for security export control regarding the provision of technology and the export of research equipment and materials. Students who fall under any of the regulated categories may be unable to obtain permission to enroll, may not be able to receive the desired education, or may face restrictions on their desired research activities at University of Toyama.

For more information, please refer to the University website.

[Reference] "University of Toyama Security Export Control Regulations"

URL <http://www3.u-toyama.ac.jp/soumu/kisoku/pdf/0110401.pdf>

8.Preliminary Consultation for Applicants with Disabilities

Applicants with disabilities who wish to request special accommodations for the entrance examination or for their studies after enrollment should consult with the Admissions Office of the School of Science, University of Toyama, prior to applying.

If necessary, applicants may be asked to submit a medical certificate along with documents containing the following information:

- Type(s) of disabilities and the degree of severity
- Items for special arrangements required during the entrance examination
- Items for special arrangements required in classes after enrollment
- Situation of daily life and other related information

Consultation Deadline:

Social Data Science Program

Category	Consultation Deadline
Admission Examination with Recommendation	Friday, May 9, 2025
Comprehensive Admission Examination (Including enrolment in October 2025.)	Friday, June 20, 2025

Global Sustainability Science program

Category	Consultation Deadline
Schedule A (Including enrolment in October 2025.)	Friday, May 9, 2025

Contact: Examination Section of Admissions Office, School of Science, University of Toyama, 3190 Gofuku, Toyama City, Toyama Prefecture, 930-8555, Japan

Phone: +81-(0)76-445-6546

9.Policy on Personal Information Protection

Personal information possessed by the University of Toyama shall be handled based on the Act on the Protection of Personal Information and University of Toyama Personal Information Protection Policy.

- (1) Personal information (including name, address, etc.) of applicants obtained through the application shall be used for ① application and selection procedure, ② announcement of Successful Applicants, ③ admission procedure, ④ survey/study of the selection method, and ⑤ operations associated with these purposes
- (2) Personal information of those who completed the admission procedure obtained through the application shall

be used for post-admission operations related to ① academic affairs (registration, study guidance, etc.), ② student support (health care, application for tuition exemption/scholarship, career support, etc.), ③ tuition collection work, and ④ statistical survey and data analysis.

- (3) Only the examinees' numbers, names, and addresses of Successful Applicants may be used for contact with the Alumni Association or Co-op as an affiliated organization. If Successful Applicants do not wish to have any contact with these organizations, inform the office.
- (4) University of Toyama may have contractors to do some kind of university operations. When conducting the operations, all or part of the personal information obtained shall be provided to the contractor within the limit necessary to perform the operations, however, University of Toyama supervises the use of information to ensure compliance with confidentiality.

10. Special Measures for Educational Methods based on Article 14 of the Standards for Establishment of Graduate Schools

Article 14 of the Standards for Establishment of Graduate Schools stipulates that “Where it is deemed to be particularly necessary from an educational standpoint, education can be provided by an appropriate method, such as providing classes or research guidance at night or at other specific times/periods.” Based on this, the Graduate School of Sustainability Studies will provide consultation on the time schedule as much as possible, including day and night classes or other times, taking into consideration the working conditions of the workplace so that working adults are able to study without leaving their jobs.

11. Disclosure of Entrance Examination Information

The criteria for the admission decision, as well as correct answers and sample responses related to the entrance examination for the 2025 academic year Graduate School of Sustainable Society Creation Program, are as follows:

(1) Admission Decision Criteria

• Social Data Science Program

① Comprehensive Admission Examination:

Application documents (academic transcript) 100 points, interview (including oral questions regarding academic ability) 200 points, total 300 points. Admission decisions will be made based on the highest scores.

② Admission Examination with Recommendation:

Application documents (academic transcript) 100 points, interview (including oral questions regarding academic ability) 100 points, total 200 points. Admission decisions will be made based on the highest scores.

• Global Sustainability Science Program

① General Admission Examination:

Application documents (academic transcript) 100 points, External English test 200 points, total 300 points, Presentation-based oral examination 700 points, total 1000 points. Admission decisions will be made based on the highest scores.

② Admission Examination with Recommendation:

Application documents (academic transcript) 300 points, Presentation-based oral examination 700 points, total 1000 points. Admission decisions will be made based on the highest scores.

③ Special Admission Examination for Working Adults:

Application documents (academic transcript) 300 points, Presentation-based oral examination 700 points, total 1000 points. Admission decisions will be made based on the highest scores.

(2) Purpose of Examination and Other Details

- **Interview:** The purpose of the interview will be disclosed.
- **Oral Examination:** The purpose of the oral examination will be disclosed.

(3) Other

- ① The purpose of the examination and other related details will be disclosed on the University's official website.
- ② The results of the entrance examination will not be disclosed.

Guide of the Graduate School of Sustainability Studies (Master's Course)

1. Educational and Research Purpose

Educational and research purpose of the Graduate School of Sustainability Studies is to develop human resources who can contribute to the construction of “Sustainable society” by teaching and researching interdisciplinary theories and their applications of Science and Engineering, and Social Sciences that are necessary for the construction of “Sustainable society.” The Graduate School of Sustainability Studies enables students to gain insight into insights of interdisciplinary theories and their applications of Science and Engineering, and Social Sciences, and acquire deep knowledge, outstanding abilities and ethics that are indispensable for professions requiring a high level of expertise.

(1) Social Data Science Program

The Social Data Science Program aims to nurture individuals who can contribute to regional revitalization and the achievement of SDGs by appropriately interpreting the abundant data in modern society, identifying and solving issues, and creating new value..

(2) Global Sustainability Science Program

Global Sustainability Science Program seeks to develop human resources who can contribute to building a “Sustainable society” by acquiring the ability to create new knowledge to solve the various challenges needed to construct a sustainable society. The program also focuses on equipping students with the foundational English language skills necessary for global engagement and the ability to propose new solutions to the various societal challenges faced by the world.

2. Features of the curriculum

A key feature of the curriculum at the Graduate School of Sustainability Studies is the establishment of classes in a wide range of academic fields of both Humanities and Sciences from 2 perspectives of “Region” and “Global scale”. In these classes, the issues confronting modern society are dealt with for the aim of developing human resources capable of solving issues toward the realization of “Sustainable society.” The faculties of the Graduate School of Sustainability Studies are mainly from the academic fields of Social Science (Economics, Business Administration) and Science and Engineering (Environmental Science, Urban Design), and the classes are designed to encourage students to constantly think about issues related to a "Sustainable society" from social, environmental and economic perspectives.

Students will be able to acquire universal and specialized abilities through common classes of whole graduate school providing comprehensive knowledge, common classes of the Graduate School of Sustainability Studies providing comprehensive knowledge and practical skills related to “Sustainable society,” and special classes of the Graduate School of Sustainability Studies providing specialized knowledge and skills necessary to solve problems in a particular field. In addition, they will receive research guidance from multiple advisors from multiple academic fields.

The Graduate School of Sustainability Studies places importance on cross-cutting studies for subjects that students set themselves. For this, a common curriculum is established for both programs, which provides lectures, exercises, and practice that carrying the importance. Since less time is allocated to special research than conventional type curricula, study plans are easier to design, as a result, it can meet the needs for the relearning of working adults. At the same time, the Global Sustainability Science Program also provides a conventional type curriculum that emphasizes studies through special research, so that students can select curricula in accordance with their needs.

3. List of faculties and research fields

Social Data Science Program

(https://www.gss.u-toyama.ac.jp/program/social_data_science/)

Research Field	Faculty Name	Research Description
Economics	KARATO Koji, Professor	Real estate price index analysis, urban and regional economic analysis, real estate market analysis in the fields of economic statistics and econometrics.
Economics	MOVSHUK Oleksandr, Professor	Research guidance on related topics in econometrics.
Economics	HOMMA Tetsushi, Professor	The teaching of the theoretical and empirical analyses of the industrial organization of banking in the field of financial economics, industrial organization, and econometrics.
Sociology	NAKAMURA Mayumi, Professor	Professor Nakamura specializes in gender stratification and social research methods. She conducts quantitative and qualitative research on regional revitalization (地方創生) and related topics, such as low birth rates, the compact city policy, the introduction of the bullet train, and youth depopulation.
Business Management	YOKOYAMA Kazunori, Professor	In operations research, provide research guidance on mathematical optimization and other related topics.
Information Science	HARUKI Takayuki, Associate Professor	Computational science, pre-disease science, and plasma physics.
Sustainable Design	HORI Yuji, Professor	Evaluations and improvements in architecture and cities, the reduction of environmental burdens and of energy consumption and transformation into renewable energies, etc. toward recycling society, etc. in environmental engineering and facility engineering.
Transportation Planning	INOI Hiroto, Associate Professor	Impact assessments of the construction and maintenance of public transportation and behavior modification from automobiles to public transportation in civil engineering planning, traffic engineering, and urban planning.
Geology	YASUE Ken-ichi, Associate Professor	Regional disaster prevention and educational tourism in geomorphology and geology.
Solid Earth Geophysics	WATANABE Tohru, Professor	Research instructions will be given on physical properties of rocks to understand the Earth's interior.
Meteorology	YASUNAGA Kazuaki, Professor	Provide research instructions on climate change and related severe weather disasters in the mid-latitudes and tropics.
Applied Meteorology	HAMADA Atsushi, Associate Professor	Provide research instructions on meteorological phenomena related to precipitation and clouds, with a focus on data analysis.

Global Sustainability Science Program

(https://www.gss.u-toyama.ac.jp/program/global_sdgs/)

Research Field	Faculty Name	Research Description
Environmental and Analytical Chemistry	KURAMITZ Hideki, Professor	Environmental chemistry and analytical chemistry, and conducts research guidance in the development of new sensors and analysis methods and environmental measures utilizing them.
Soil Environmental Studies	SAZAWA Kazuto, Junior Associate Professor	Our laboratory provides instruction in the chemical analysis of organic substances in soil and aquatic environments, their interactions with environmental contaminants, and the ecotoxicological changes that result from these interactions.
Geochemistry	ZHANG Jing, Professor	Chemical oceanography and environmental geochemistry, and conducts research guidance in the collection and understanding of necessary scientific information and investigation and research methods.
Geochemistry	HORIKAWA Keiji, Professor	Environmental geoscience, and conducts research guidance in the collection and understanding of necessary scientific information and investigation and research methods.
Geochemistry	KAGOSHIMA Takanori, Assistant Professor	Geochemical research focusing on “solid Earth science (e.g., volcanic/earthquake activity and geochemical cycles) and SDGs”.
Ecology	WADA Naoya, Professor	Ecology and environmental conservation science, and conducts research guidance in the collection and understanding of necessary scientific information and investigation and research methods.
Aquatic Ecology	PETERSON Miles Isao, Assistant Professor	Our laboratory focuses on conservation ecology in aquatic ecosystems, specifically examining the ecosystem impacts and establishment mechanisms of harmful introduced species.
Pest Management Science	TSUCHIDA Tsutomu, Associate Professor	General insect pest control and the utilization of biological genetic resources focusing on biological interactions and endosymbiosis phenomena.
Environmental Physics	ENOMOTO Katsunari, Associate Professor	Investigations of the characteristics and reaction element processes of air pollutants and heavy metal-containing molecules using laser spectroscopy technology and the development of environmental monitoring technology.
Business Administration	MA Jun, Professor	Management of organizations and human resources. Using statistical analysis and field survey methods, this research focuses on elucidating the mechanisms of penetration of an organization's management philosophy and organizational culture, and the mechanisms of human resource development and management within organizations.

Area Studies	HORIE Norio, Professor	Migration studies and border studies, focusing on migrants' daily life in urban area in the European part of Russia and the Sino- Russian border regions. Multi-disciplinary approach to explore more complex observations regarding the negative and positive impacts of migrants on local society and regional development.
Sustainability Science	GEETHA Mohan, Professor	Sustainability Science is an emerging field focusing on practical challenges like agriculture (crop) losses, food security, and water scarcity caused by climate and non-climate elements (population growth, governance, desertification etc.). The research guidance offers an understanding of the association between natural and social sciences for pursuing productive solutions to address these sustainability challenges.
Sustainability Science	CHAKRABORTY Shamik, Associate Professor	Rooted in the discipline of sustainability studies as a holistic and transformative science, research guidance will be provided on issues related to the SDGs and provide research guidance on sustainable use and management of natural resources, and valuation of ecosystem services from the perspective of social ecological systems.
Sustainability Science	SHISHIR Sharmin Assistant Professor	<p>We will address issues related to SDGs (SDGs 6, 7, 9, 11, 13, 14, 15) in the fields of Land use and land cover (LULC), Forest cover, Forest disturbances, Urban growth, Climate change, Agricultural land use dynamics, Environmental pollution, Disaster management, Sustainable development, etc. By making full use of cutting-edge technologies such as GIS (geographic information system) and Remote sensing, we work to manage and preserve ecosystems and the natural environment. Furthermore, our research broadly includes Regional studies, Geography and Environment, River morphology, Migration dynamics, Global warming, etc.</p> <p>We also provide research guidance on organizing and understanding basic academic knowledge and research methods.</p>

4. Courses and Credits

Common Graduate Courses for All Graduate Schools

Subject Category	Subjects	Credits
	○ Research Ethics	1
	○ Science, Technology and Sustainable Society	1
	Geographical Symbiosis Social Theory	1
	Communication for Researchers	1
	Art and Design Thinking	1
	Academic Writing I	1
	Academic Writing II	1
	Advanced Data Science	1
	Career Development for Graduate Students	1
	Intellectual Property Law	1

Remarks : ○ denotes a required subject.

Common Graduate Courses

Subject Category	Subjects	Credits
	○ Introduction to Science for Sustainable Societies	1
	Cultural Diversity for Sustainable Societies	1
	Environmental Science for Sustainable Societies	1
	Global Issues and Social Science	1
	Design Thinking	1
	Entrepreneurship	1
	Internship	1

Remarks : ○ denotes a required subject.

Interfaculty Specialty Courses (Social Data Science Program)

Subject Category	Subjects	Credits
Foundation Subjects	○Advanced Linear Algebra	1
	○Advanced Mathematical Statistics I	1
	○Advanced Mathematical Statistics II	1
	○Advanced Information Science	1
	○Advanced Cyber Physical Systems	1
	○Advanced Information Sensing	1
Practical Subjects	Advanced Optimization Theory	1
	Advanced Time Series Analysis	1
	Advanced Stochastic Processes	1
	Machine Learning Theory I	1
	Machine Learning Theory II	1
	Advanced Spatial Statistics I	1
	Advanced Spatial Statistics II	1
	Advanced Text Mining	1
	Special Lecture on Econometrics I	1
	Special Lecture on Econometrics II	1
	Special Lecture on Social Data Science	1
	Advanced Social Data Science Seminar A	1
	Advanced Social Data Science Seminar B	1
	Social Data Science English Exercise I	1
	Social Data Science English Exercise II	1
Domain Subjects	<Sustainable Design>	
	Advanced Urban and Regional Planning	1
	Advanced Transport for a Sustainable Society	1
	Advanced Urban and Architectural Environment Design I (Visual Environment Planning)	1
	Advanced Urban and Architectural Environment Design II (Environment and Energy Planning)	1
	Advanced Urban and Architectural Environment Design III (Fire Safety Engineering)	1
	Advanced Physical Properties of Earth's Materials	1
	Advanced Applied Meteorology	1
	Advanced Meteorology	1
	<Social Science>	
	Special Lecture on Community Sociology I	1
	Special Lecture on Community Sociology II	1
	Special Lecture on Management I	1
	Special Lecture on Management II	1
	Special Lecture on Modern Economic Theory I	1
	Special Lecture on Modern Economic Theory II	1
	Special Lecture on Applied Econometrics I	1
	Special Lecture on Applied Econometrics II	1
	Special Lecture on Econometrics of Financial Markets I	1
	Special Lecture on Econometrics of Financial Markets II	1
	Special Lecture on Social Research Methods I	1
	Special Lecture on Social Research Methods II	1
	Special Lecture on Selected Topics in Operations Research I	1
	Special Lecture on Selected Topics in Operations Research II	1
Special Research	○1st-Year Pro-seminar in Social Data Science	1
	○2nd-Year Pro-seminar in Social Data Science	1

	○1st-Year Thesis Seminar in Social Data Science	1
	○2nd-Year Thesis Seminar in Social Data Science	1

Remarks : ○ denotes a required subject.

Interfaculty Specialty Courses (Global Sustainability Science Program)

Subject Category	Subjects	Credits
Foundation Subjects	○ Essentials of Environmental Science for Sustainable Societies	1
	○ Essentials of Economics for Sustainable Societies	1
	○ Advanced Academic Writing and Communication for Sustainability Science	1
	○ Data analysis and GIS for Sustainability Science	2
Practical Subjects	Advanced Migration Studies	1
	Advanced Border Studies	1
	Special Study of Management I	1
	Special Study of Management II	1
	Climate Change, Sustainable Agriculture and Food Security	1
	Sustainable Water Resources Management	1
	Advanced Study on Social-Ecological system	1
	Advanced Study on Sustainable Natural Resources Management	1
	Remote Sensing and Environmental Monitoring	1
	Remote Sensing Applications in Social Sciences	1
	Climate Change Analysis	1
	Advanced Analytical Science for Sustainable Water Environment I	1
	Advanced Analytical Science for Sustainable Water Environment II	1
	Advanced Analytical Science for Sustainable Water Environment III	1
	Advanced Analytical Science for Sustainable Water Environment IV	1
	Chemical Oceanography	1
	Chemistry for volcanoes and earthquakes	1
	Advanced Sustainable Physics: Energy and Measurement Technology	1
	Advanced Plant Ecology	1
	Advanced Conservation Biology	1
	Advanced Plant Production	1
	Integrated Pest Management	1
	Invasive Species: Introductions, Effects, and Management	1
	Freshwater Biodiversity Conservation	1
	Global SDGs Special Lectures	1
	◎Global SDGs Field Exercise I	1
	◎Global SDGs Field Exercise II	1
	◎Global SDGs English Exercise I	1
	◎Global SDGs English Exercise II	1
	◎Sustainable coexistence between people and nature having 4000 m altitudinal difference	1
	◎Short-term SDGs Internship	1
	Migration Studies Seminar I	1
	Migration Studies Seminar II	1
	Border Studies Seminar I	1
	Border Studies Seminar II	1
	Seminar for Management of Organization and Human resource I	1
	Seminar for Management of Organization and Human resource II	1

Practical Subjects	Seminar on Human Development Policy I	1
	Seminar on Human Development Policy II	1
	Global Sustainability Challenges-I	1
	Global Sustainability Challenges-II	1
	Building Resilient and Sustainable Societies-I	1
	Building Resilient and Sustainable Societies-II	1
	Seminar on Social-Ecological System I	1
	Seminar on Social-Ecological System II	1
	Seminar on Sustainable Natural Resources Management I	1
	Seminar on Sustainable Natural Resources Management II	1
	Seminar on Remote Sensing and Environmental Monitoring I	1
	Seminar on Remote Sensing and Environmental Monitoring II	1
	Seminar on Remote Sensing Applications I	1
	Seminar on Remote Sensing Applications II	1
	Seminar on Isotope Measurement	1
	Seminar on Isotopic Geochemistry I	1
	Seminar on Isotopic Geochemistry II	1
	Seminar on analytical chemistry in environmental monitoring I	1
	Seminar on analytical chemistry in environmental monitoring II	1
	Seminar on chemistry in water treatment I	1
	Seminar on chemistry in water treatment II	1
	Seminar on environmental water analysis I	1
	Seminar on environmental water analysis II	1
	Seminar on environmental soil analysis I	1
	Seminar on environmental soil analysis II	1
	Seminar on Chemical Oceanography I	1
	Seminar on Chemical Oceanography II	1
	Seminar on Hydrosphere Geochemistry I	1
	Seminar on Hydrosphere Geochemistry II	1
	Seminar on Quantum Electronics I	1
	Seminar on Quantum Electronics II	1
	Seminar on Plant Ecology	1
	Seminar on Forest Ecology and Management	1
	Seminar on Alpine Ecology	1
	Seminar on Conservation Biology	1
	Seminar on Crop Genetics I	1
	Seminar on Crop Genetics II	1
	Seminar on Plant Molecular Genetics I	1
	Seminar on Plant Molecular Genetics II	1
	Seminar on Symbiosis Science I	1
	Seminar on Symbiosis Science II	1
	Seminar on Integrated Pest Management I	1
	Seminar on Integrated Pest Management II	1
	Global Biodiversity Challenges- I	1
	Global Biodiversity Challenges- II	1
	Global Biodiversity Challenges- I	1
	Global Biodiversity Challenges- II	1

Remarks : © denotes a elective required subject. (Select at least 1 credit from © of the practical subjects)

Special Research	◎Research track	
	Master's Research on Sustainability Science for Research Track I	2
	Master's Research on Sustainability Science for Research Track II	2
	Master's Research on Sustainability Science for Research Track III	2
	Master's Research on Sustainability Science for Research Track IV	2
	Master's Research on Sustainability Science for Research Track V	2
	◎Specialist track	
	Master's Research on Sustainability Science for Specialist Track I	2
	Master's Research on Sustainability Science for Specialist Track II	2

Remarks : ◎ denotes an elective required subject. (Select either Research track or Specialist track)

Method of earning credits

Program	Common Graduate Courses for All Graduate Schools	Common Graduate Courses	Interfaculty Specialty Courses
Social Data Science Program	required subject 2 credits elective subject 2 credits or more	required subject 1 credit elective subject 3 credits or more	required subject Foundation Subjects 6 credits Special Research 4 credits elective subject Practical Subjects 8 credits or more Domain Subjects 4 credits or more
Global Sustainability Science Program	required subject 2 credits elective subject 2 credits or more	required subject 1 credit elective subject 3 credits or more	required subject Foundation Subjects 5 credits elective subject At least 17 credits including the following elective required subject <ul style="list-style-type: none"> Practical Subjects 1 credit or more from ◎ Special Research 10 credits or more from ◎Research track Or 4 credits or more from ◎Specialist track

5. Requirements for completion

A master's degree will be awarded to students who have been enrolled in the Master's Course of the Graduate School of Sustainability Studies for 2 or more years, have acquired 30 or more credits from the designated classes of each program, and have passed the dissertation review and the final examination.

However, with regard to the period of enrollment, if a student has achieved excellent research results, a master's degree will be awarded to the student on condition that they are enrolled in the Graduate School of Sustainability Studies for at least 1 year.

The degrees awarded in each program are as follows:

Degree to be awarded

Social Data Science Program	Master's degree (Social Data Science)
Global Sustainability Science Program	Master's degree (Sustainability Science)

6. Long-term study system

Long-term study system is for student who has a full-time occupation and difficulty completing his/her Master's Course within the standard study period because of restricted time for class attendance or conducting research. The student may extend the study period of up to 4 years.

If application is approved at the time of admission, the student will pay the total amount of the tuition fee of 2 years evenly divided for each semester in the period approved.

The details of the Long-term study system, including the application method, will be informed when we send the documents for the admission procedure by mail.

Note that applications may not be approved.